



Forward Work Program

2014–15 to 2017–18

ABS Cat. No. 1006.0



Table of Contents

Preface	1
Notes to this publication	2
General Information	3
Overview of the ABS	4
ABS goals, strategies and key projects	5
How the ABS operates	8
How the ABS work program is determined	9
Governance framework	11
Our commitment to reconciliation and diversity	14
Our products and services	15
ABS Charging Policy	17
The ABS leadership team	18
Organisational structure	20
Statistical Leadership	23
National Statistical Service Leadership	24
State and Territory Statistical Services	25
International Relations and Regional Statistical Development	26
Statistical Data Integration Leadership	27
Statistical Programs	29
National Accounts	30
International Accounts	31
Financial Statistics	32
Prices	33
Public Sector Accounts	34
Business Indicators	35
Innovation and Technology Statistics	36
Business Demographics	37
Building and Construction Statistics	38
Industry Statistics	39
Agriculture Statistics	40
Transport Statistics	41
Tourism Statistics	42
Environment Statistics	43
Demography	44
Labour Statistics	45
Economic Analysis and Reporting	46
Regional Statistics	47
Census of Population and Housing	48
Health and Disability Statistics	49
Education and Training Statistics	50
Crime and Justice Statistics	51
Aboriginal and Torres Strait Islander Statistics	52
Social Conditions Statistics	53
Migrant Statistics	54
Analytical Services	55
Statistical Infrastructure and Corporate Support Programs	57
Business Register Unit	58
Geography	59
Data Standards and Methods	60
ABS 2017 Program Management Office	61
ABS 2017 Information Infrastructure	62
Data Acquisition and Collection	63
ABS Centre for Data Integration	64
Customer Services	65
Statistical Services	66
Corporate Services	67
Technology Services	68
Appendices	69
Statistical and topic advisory groups	70
Contacts	72

Preface



The Australian Bureau of Statistics (ABS) is Australia's national statistical agency. The quality, integrity and relevance of our statistics are critical to informing effective decision making and supporting public debate.

This document describes the program of work we plan to undertake from 2014-15 to 2017-18. It includes a description of key goals and strategies and describes, for each sub-program, our objectives, outputs and key developments.

Budget constraints have necessitated some changes to our program. The section "How the ABS Work Program is Determined" describes the approach we take to ensure that resources are applied to deliver maximum benefit through a well-balanced program.

What has not changed is our commitment to ABS values. The ABS will continue to uphold its position as a trusted and independent provider of information for Australia. We will maintain the confidentiality of the individuals and businesses whose information we collect while striving to make our statistics as accessible and useful as possible.

Efforts to transform how we collect, manage and deliver information continue to be a priority. It is only through constant innovation that we will be able to remain relevant and continue to provide a world-class statistical service for the benefit of all Australians.

Jonathan Palmer

Acting Australian Statistician
August 2014

Notes to this publication

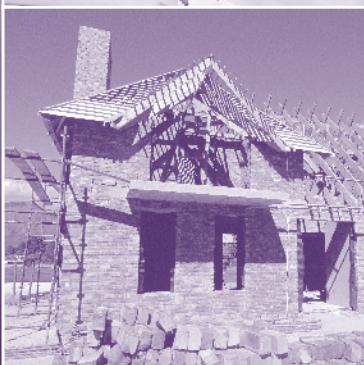
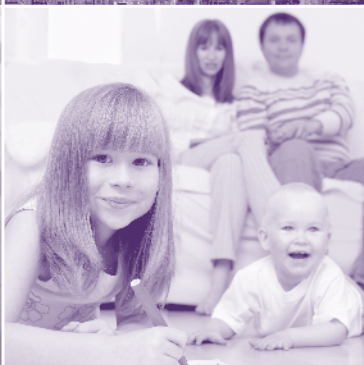
Resources

Resource costs presented in this publication reflect estimates for the three years 2014-15 to 2016-17. (Estimates for 2017-18 were not yet finalised at the detailed program level at time of publication so are not included.) These costs present a broad indication of the resources currently allocated to each program but should not be taken as an accurate basis for estimating future allocations. Changes in the composition and budget of programs in the ABS Forward Work Program are made from year to year. Therefore it is not possible to compare the projections attributed to programs between different ABS Forward Work Program publications.

The 2014-15 figures are full-year projections based on the agreed budget for the year. Projections for 2015-16 and 2016-17 are subject to change as priorities are reviewed and new budgets are agreed. The projections for all three years reflect all expenditure attributable to the programs presented in this publication.



General Information



Overview of the ABS

The ABS is Australia's official national statistical agency. It was established as the Commonwealth Bureau of Census and Statistics following enactment of the *Census and Statistics Act 1905*. The agency became the Australian Bureau of Statistics in 1975 with the passing of the *Australian Bureau of Statistics Act 1975*. This Act also established the role of the Australian Statistician and defined the functions of the ABS.

The role of the ABS

The ABS provides statistics on a wide range of economic, social, population and environmental matters for government, business and the community. It also has a legislated role to coordinate the statistical operations of official bodies and liaise with international organisations.

ABS mission

We assist and encourage informed decision making, research and discussion within governments and the community, by leading a high quality, objective and responsive national statistical service.

ABS values

The ABS and its staff uphold the Australian Public Service (APS) Values and Code of Conduct. ABS values, which are congruent with the APS values, are critical to the ABS's role as an independent provider of statistical information for Australia. The ABS values are:

- ▶ Integrity
- ▶ Trust of providers
- ▶ Relevance
- ▶ Professionalism
- ▶ Access for all
- ▶ Service.

The ABS values are described in detail in the *ABS Corporate Plan* (cat. no. 1005.0).

Census and Statistics Act 1905

- ▶ Provides the legislative authority to undertake the Census of Population and Housing and other statistical collections
- ▶ Provides the Australian Statistician with the power to direct a person to supply information
- ▶ Requires the ABS to publish the results of its collections
- ▶ Imposes strict secrecy provisions on officers of the ABS.

Australian Bureau of Statistics Act 1975

- ▶ Establishes and ensures the independence of both the ABS and the Australian Statistician
- ▶ Describes the functions of the ABS
- ▶ Requires ABS to advise Parliament of proposals for new collections
- ▶ Establishes the Australian Statistics Advisory Council (ASAC)
- ▶ Requires ABS and ASAC to report to Parliament each year.

ABS functions

- ▶ To constitute the central statistical authority for the Australian Government and, by arrangements with the governments of the states and territories, provide statistical services for those governments
- ▶ To collect, compile, analyse and disseminate statistics and related information on a wide range of economic and social matters
- ▶ To formulate and ensure compliance with statistical standards
- ▶ To ensure coordination of the statistical operations of official bodies
- ▶ To provide advice and assistance to official bodies in relation to statistics
- ▶ To liaise with statistical agencies of other countries and international organisations.

Australian Statistics Advisory Council

Advises the Minister and the Australian Statistician on:

- ▶ the improvement, extension and coordination of statistical services provided for public purposes in Australia
- ▶ annual and longer-term priorities and programs of work that should be undertaken by the ABS
- ▶ any other matters relating to those statistical services.

ABS goals, strategies and key projects

The ABS establishes its work program in response to current and emerging statistical priorities, and in the context of the ABS mission and corporate plan. To help in prioritising and shaping its forward work program, the ABS has identified four overarching goals in its corporate plan. The strategies to achieve each goal underpin the forward work program and the organisation's planning mechanisms.

ABS goals

GOAL: INFORMED AND BETTER USE OF AUSTRALIA'S STATISTICAL ASSETS

Strategies:

- ▶ deliver high quality, objective and flexible official statistics
- ▶ improve the accessibility, timeliness and relevance of Australia's statistical information
- ▶ improve the management and informed use of official statistical information.

Outcome: *Timely high quality statistical information that is readily accessible.*

GOAL: CONTINUED TRUST AND SUPPORT OF PROVIDERS

Strategies:

- ▶ effective engagement with providers
- ▶ develop solutions that maintain confidentiality but unlock the value of information.

Outcome: *Engaged, responsive and supportive providers who trust the ABS.*

GOAL: LONG-TERM ORGANISATIONAL SUSTAINABILITY

Strategies:

- ▶ better prepare our people for the future
- ▶ transform our business systems and processes
- ▶ foster our ability to innovate.

Outcome: *A capable, innovative and productive organisation.*

GOAL: RESPECTED LEADER IN THE NATIONAL AND INTERNATIONAL STATISTICAL COMMUNITIES

Strategies:

- ▶ enhance the coordination of, and investment in, the National Statistical Service
- ▶ build strong statistical capacity and capability domestically and within Asia and the Pacific region
- ▶ shape and influence national and international discussions regarding statistical frameworks and policies.

Outcome: *The ABS is influential and sought after for independent information, advice and expertise.*

Key projects delivering these goals and strategies

Transforming the way we collect, manage and deliver information: the ABS 2017 Program

The rapidly evolving information environment presents important opportunities for the ABS. As information becomes increasingly accessible and immediate, our partners expect Australia's statistical system to improve on a similar trajectory. The ABS 2017 program is addressing key concerns such as the timeliness, flexibility and agility of official statistics. To continue to meet expectations, our infrastructure needs to cope with higher volumes of data from a wider range of sources, and we need our business processes to enable us to quickly translate data into high-quality, relevant and trusted statistics.

The ABS 2017 program is transforming our business processes and information systems to address these challenges. This includes improvements to how we collect, collate, manage, use and disseminate statistical information.

The harmonisation of statistical production and information management approaches needed within the ABS are also needed by other national statistical offices. The ABS is collaborating internationally to develop the next generation of statistical infrastructure. Work currently underway in the international statistical community is focussing on business architecture; administrative data; new platforms for collection; and innovation in dissemination.

Delivering a successful predominantly digital Census in 2016

Australia's seventeenth national Census of Population and Housing, to be held in August 2016, will be significantly different from the previous Censuses. The 2016 Census will be the first Census with a majority of responses received online, with a target of six and a half million households using the eCensus, and the first Census that the majority of households are contacted via mail rather than by a Census collector. These major changes are necessary to ensure the long term sustainability of the Census program and to establish a foundation for future development and innovation that takes full advantage of the available technology.

The key goals for the 2016 Census are to:

- ▶ maintain and make targeted improvements to the coverage of the population overall, including at the small area level and for specific population groups
- ▶ maximise the value of the Census by improving data quality (relevance, timeliness, accuracy, coherence, interpretability, accessibility)
- ▶ increase the efficiency of operations throughout the end-to-end Census process
- ▶ contribute to the sustainability of the ABS and the Census program
- ▶ protect the privacy of all Australians.

In order to support the significant change in Census operations in 2016, the ABS needs to develop new capabilities in relation to field force management and coordination; mechanisms and systems to engage most citizens online; an up-to-date and accurate national residential address list; real-time monitoring of Census operations; and a smarter online form that is compatible with mobile devices. This capability development will be supported with an annual field testing program that will allow new processes, systems and methodologies to be tested in the real world and refined before they are required for operation in 2016.

Providing leadership and services to maximise the use of government data

There is untapped potential to use existing data and new data analytic techniques in a way that protects respondents and improves the efficiency and effectiveness of government. Consistent with the ABS's goal to be a respected leader in the national and international statistical communities, the ABS will lead significant whole-of-government initiatives including:

- ▶ identifying Australia's Essential Statistical Assets (ESA) and Infrastructure
- ▶ developing and implementing the Spatial Statistical Framework
- ▶ developing a National Statistics Policy
- ▶ reducing regulatory burden and red tape.

The ABS will also engage with whole-of-government priorities such as Big Data and Open Government, as well as APS Modernisation and Efficiency strategies, particularly through the provision of value add advice and services such as anonymisation services, data integration services and data access services.

Essential Statistical Assets for Australia

The aim of the ESA for Australia initiative is to allow for effective prioritisation of investment, focus and effort within the National Statistical Service, by identifying those essential statistical assets which are critical to decision-making in a complex and sometimes fragmented information environment across Australia.

There are four phases in the overall initiative:

- ▶ phase 1 – developing the 2013 list of ESA for Australia (complete)
- ▶ phase 2 – assessing the quality of the assets present on the list of ESA for Australia
- ▶ phase 3 – developing a list of Essential Statistical Infrastructure
- ▶ phase 4 – identifying and pursuing future investment priorities.

Phase one of the initiative, the 2013 list of *Essential Statistical Assets for Australia* (ABS cat. no. 1395.0) is complete. The focus for 2014-15 will be progressing phase two (quality assessment and gap analysis of the ESA for Australia list) and phase three (identifying Australia's essential statistical infrastructure).

Spatial Statistical Framework

The ABS is responding to the challenge of better integrating statistical and geospatial information by developing the Statistical Spatial Framework (SSF). This framework will provide a common approach to connecting people-centric (socio-economic) information to a location and will improve the accessibility and usability of this spatially-enabled information. The SSF will help any organisation wanting to understand people, society and the economy in the context of place.

National Statistics Policy

The National Statistics Policy (NSP) has two main purposes. It provides a mechanism to improve the overall functionality and utility of the national statistical system by ensuring statistical activities are effectively coordinated, and it provides goals for the system. The NSP:

- ▶ defines the national statistical system
- ▶ provides a set of goals for the future of the national statistical system
- ▶ identifies the various participants and specifies their responsibilities
- ▶ provides a set of principles and practices to guide the behaviour of participants
- ▶ sets out the governance framework needed to adequately manage and improve the system and achieve the future goals.

How the ABS operates

To meet its responsibilities, the ABS delivers high-quality statistical programs, provides statistical leadership within Australia and internationally, and works with other national statistical offices to develop and maintain statistical infrastructure.

The ABS has a central office in Canberra and regional offices located in the eight state and territory capitals. Regional offices are responsible for the delivery of statistical services to their state or territory. All regional offices, apart from the ACT office, also have some responsibilities for national operations for particular statistical activities.

Producing official statistics

The ABS produces and disseminates statistics under the following broad programs:

- ▶ Economic and Environment Statistics
- ▶ Population, Labour and Social Statistics.

The Economic and Environment Statistics Group and the Population, Labour and Social Statistics Group lead and deliver high-quality statistical programs to inform governments, researchers and the Australian community. Both groups work across the entire statistical process, with the support of other areas within the ABS, and ensure that their statistics fit within internationally accepted conceptual frameworks, accurately reflect the real world, and adapt to changing user needs.

The statistical production process involves developing specifications for statistics based on user information needs, through to the delivery of statistical information in formats that best suit clients. The ABS uses the Statistical Production Activity Model which provides a broad overview of the statistical production process. The model has eight phases: scope, design, assemble, collect, compile, validate, disseminate, and evaluate. Statistical production is enabled by several overarching processes, including the management of datasets, metadata, and statistical frameworks.

To undertake their roles effectively, the statistical groups in the ABS draw on the services and expertise of the Methodology and Data Management Division, the Data Acquisition and Collection Branch, and the Customer Services Branch. These expert areas ensure that ABS statistics are produced to world-class standards with optimum efficiency.

The Methodology and Data Management Division reports directly to the Australian Statistician, providing oversight of the statistical program to ensure professionalism, confidentiality, and objectivity in all ABS products and services. ABS methodologists also provide advice to the statistical groups and the ABS 2017 Group on issues relating to metadata management; survey design; data collection methodology; analysis; and data quality management. Methodologists also undertake research on statistical methods to improve the efficiency and accuracy of ABS work, and provide leadership and support in the development, review and application of statistical classifications.

The ABS 2017 Group was established in 2012 to assist the ABS to achieve strategic business transformation by 2017. The ABS 2017 Group centralises key statistical acquisition and dissemination services, the 2016 Census program, and information infrastructure and design. The group is focussed on developing the fundamental statistical infrastructure required for increased efficiency and versatility; building enterprise-level eCollection capability for business and household surveys; transforming the 2016 Census business model; and transforming the way the ABS receives and processes data from all sources.

ABS corporate and technology services help the ABS to achieve its strategic directions. These programs provide enabling technologies and lead the ABS in the areas of culture; legislation; legal compliance; capability development; brand and reputation management; and resource management.

The organisational structure of the ABS ensures it is able to continue to develop and maintain expertise in key statistical topics, and to nurture expertise across the statistical cycle.

How the ABS work program is determined

The Australian Statistician is responsible for determining the ABS work program. The work program must align with the ABS's mission, its legislative mandate, regulations as determined by the Australian Parliament and ABS values. The work program is developed in consultation with the Australian Statistics Advisory Council (ASAC), users (Australian Government, state/territory governments and non-government users), user groups and data providers.

The ABS has a legislated role to conduct a Census of Population and Housing every five years and to produce population estimates for states and territories.

How the ABS balances its work program

The ABS does not have the resources to undertake all of the activities that fall within its mandate and which users would ideally require.

In balancing the ABS's program of collection and other activities, the Statistician seeks to ensure that the ABS's resources are used to the maximum benefit of governments and the broader community. In assessing this, the ABS takes account of the value of the information being sought the extent to which undertaking the activity is consistent with the ABS's legislated mandate and community expectations, and the costs the activity would impose upon providers and the broader community.

In assessing the value of the information, the ABS takes account of:

- ▶ the importance of the issue from a public policy and/or community interest perspective
- ▶ the views of Australian, state and territory government agencies
- ▶ the depth and breadth of user interest in the wider community
- ▶ the opinions of recognised experts in the field
- ▶ the extent to which the information would impact on decision making (as judged from history or from understanding the decision-making processes), and any international reporting obligations.

In assessing whether any proposed activity undertaken by the ABS would make a difference, the ABS takes account of:

- ▶ any specific legislative obligations on the ABS to undertake the activity
- ▶ the statistical measurability of the issue, including the ability to provide information that is fit for purpose
- ▶ the extent to which other available sources of information, both ABS and non-ABS, could be used to inform decision making
- ▶ the extent to which the ABS's independent authority and the ABS's power to collect information is required
- ▶ the extent to which meaningful information can be provided in the necessary time-frames
- ▶ the level of community support to provide the required information
- ▶ whether the activity will help build strong statistical capacity and capability domestically and within the Asia and Pacific region and beyond.

In assessing the cost of the activity, the ABS takes account of:

- ▶ the full cost to the ABS of undertaking the collection activity
- ▶ the capacity and capability of the ABS to undertake the collection activity
- ▶ the burden and other costs imposed on providers
- ▶ the sensitivity of the information and the ABS's requirement to maintain the trust of providers.

How the ABS understands clients needs

The ABS determines future priorities by consulting and planning with users of statistics. These consultations are a key input to decisions on the scope, content and frequency of official statistics.

Consultation takes place through the ABS organised statistics user groups; direct discussion with Australian, state, territory and local government agencies, academics, industry bodies, non-government and community organisations; social media; and the release of information or discussion papers inviting comment. A list of user groups is provided in the appendices.

Consultations cover both the need for data on new or emerging topics, and the need for changes to existing data collections including discontinuing some series. Contact with consulted groups continues throughout the statistical cycle to keep users informed on progress and as a check that developments towards statistical outputs remain on track to meet survey objectives.

The overall shape of the proposed work program and estimates of resources required to deliver it are considered by ASAC.

User-funded activities

The ABS work program is, and can be extended through user-funded activities. The ABS undertakes user-funded work where:

- ▶ the work is consistent with the ABS's mission, legislative mandate and values
- ▶ the work itself, or the related funding arrangements, does not compromise the ABS's core work program or public support for it
- ▶ there is demonstrable value in the activity
- ▶ any burden imposed on providers is acceptable
- ▶ the ABS has the capability and capacity to undertake the work
- ▶ the work is fully cost-recovered
- ▶ the ABS has full control over all aspects of the work, including ownership of statistics created from it.

Governance framework

The ABS governance framework has two broad components:

- ▶ external governance, which includes the governance arrangements that establish the ABS as a statutory authority, provide the ABS and the Australian Statistician (Statistician) with appropriate direction and powers, and hold the ABS and the Statistician to account
- ▶ internal governance, which includes the mechanisms set up by the ABS to ensure that the organisation operates efficiently and effectively, within the constraints of the direction and powers provided externally.

External Governance

The ABS provides the information required to maintain a fair electoral system and inform other important aspects of Australia's democracy. The external governance arrangements balance the need for independence to allow the ABS to effectively deliver on these responsibilities, while also ensuring the ABS operates responsibly and meets the needs of governments.

The Statistician is accountable to the Australian Parliament and the Minister responsible for the ABS. The Australian Statistics Advisory Council (ASAC) provides advice to both the Statistician and the Minister in relation to:

- ▶ the improvement, extension and coordination of statistical services provided for public purposes in Australia;
- ▶ annual and longer-term priorities and programs of work that should be adopted in relation to major aspects of the provision of those statistical services; and
- ▶ any other matters relating generally to those statistical services.

All state and territory governments are represented on ASAC. Other Council members are appointed to ensure representation across a broad cross-section of perspectives covering government, business, academic and community interests.

Along with the legislation governing all statutory authorities, the *Australian Bureau of Statistics Act 1975* (ABS Act) and the *Census and Statistics Act 1905* (C&S Act) govern the ABS. The functions of the ABS are summarised in the ABS Act:

- (a) to constitute the central statistical authority for the Australian government and, by arrangements with the governments of the states, provide statistical services for those governments;
- (b) to collect, compile, analyse and disseminate statistics and related information;
- (c) to ensure coordination of the operations of official bodies in the collection, compilation and dissemination of statistics and related information, with particular regard to:
 - (i) the avoidance of duplication in the collection by official bodies of information for statistical purposes;
 - (ii) the attainment of compatibility between, and the integration of, statistics compiled by official bodies; and
 - (iii) the maximum possible utilisation, for statistical purposes, of information, and means of collection of information, available to official bodies;
- (d) to formulate, and ensure compliance with, standards for the carrying out by official bodies of operations for statistical purposes;
- (e) to provide advice and assistance to official bodies in relation to statistics; and
- (f) to provide liaison between Australia, on the one hand, and other countries and international organisations, on the other hand, in relation to statistical matters.

The C&S Act provides the Statistician with the authority to conduct statistical collections and, when necessary, to direct a person to provide statistical information. It also imposes obligations to publish and disseminate compilations and analyses of statistical information, and to maintain the confidentiality of information collected under the C&S Act.

The Statistician and the ABS are held to account through a range of Australian Government accountability mechanisms.

Internal Governance

ABS internal governance mechanisms include planning, control, and risk management frameworks that together ensure the ABS remains relevant and responsive and continues to meet the requirements and expectations of its stakeholders. Internal governance forums deliver and oversee key elements of the ABS's planning cycles, control mechanisms and risk management. The audit and review program provides advice to the Statistician regarding controls, risks and operations.

Planning

The ABS is underpinned by the foundations of its legislated role and functions, and its enduring mission statement and values. To ensure the ABS continues to meet its responsibilities as its operating environment changes, periodic strategy reviews and planning processes are undertaken.

The *ABS Corporate Plan (cat. no. 1005.0)* presents the future directions of the ABS and is developed in close consultation with staff.

ABS senior managers undertake an annual strategy review process which incorporates environmental scanning, risk identification and direction setting with a four year horizon. This enables the review of resource allocation and a definitive prioritisation of the work program. The ABS-level strategy review interacts with divisional strategy through business planning processes and consultation programs.

Controls

Controls ensure that ABS staff are able to undertake their responsibilities effectively, within the constraints of the law and ABS values, in a way that meets community expectations of public accountability, probity and openness. Mechanisms include policies; delegations; fraud prevention and identification; role statements; and procedures.

Risk management

The ABS reviews and identifies strategic risks that have the potential to significantly impact on the organisation. The management of these enterprise risks is fundamental to the long term viability of the ABS. Reflecting their importance, these risks are assessed and managed by the ABS Executive.

There continues to be a strong focus on the integration of risk identification and prioritisation within the ABS business planning cycle. In developing business plans, managers at all levels identify key risks to their work programs. Significant risks identified at section level are elevated or integrated into business plans at the Branch and Division levels to provide a more comprehensive and consistent picture of the ABS risk profile.

Internal governance forums

The ABS has corporate governance forums to develop policies and strategies, identify ABS priorities, assess and respond to risks and opportunities, and monitor ABS performance. These include:

▶ ABS Management Meetings

ABS Management Meetings are the key forum for determining ABS strategic directions, priorities and resource allocations. Meetings are chaired by the Statistician and attended by the Deputy Australian Statisticians; First Assistant Statisticians; Regional Directors; the Chief Financial Officer; and the Assistant Statisticians of the Office of the Statistician and External Engagement and the Human Resources Branch.

▶ Executive Leadership Group Meetings

The Executive Leadership Group (ELG) provides strategic oversight of the ABS and determines ABS policy. ELG is chaired by the Statistician and membership includes the Deputy Australian Statisticians. The Assistant Statistician of the Office of the Statistician and External Engagement provides secretariat support. ELG provides high-level focus to the National Statistical Service and strategic client engagement.

▶ Strategic Finance and Investment Committee

The Strategic Finance and Investment Committee (SFIC) ensures that the ABS's major investments are aligned with the key goals of the ABS and are appropriately funded. SFIC is responsible for the development of the ABS Strategic Investment Plan which is approved by the ABS Management Meeting. SFIC is chaired by the Chief Operating Officer and membership includes the Deputy Australian Statistician responsible for the ABS 2017 Group; three First Assistant Statisticians; a Regional Director, the Chief Financial Officer; and the Assistant Statisticians of the Program Management Office and the Office of the Statistician and External Engagement.

▶ Senior Management Group Meetings

The Senior Management Group (SMG) focuses on cross-cutting issues to ensure effective delivery of the work program, including ensuring that the work program is delivered on time, within budget and to an appropriate quality. SMG meetings are chaired by the Chief Operating Officer and attended by all First Assistant Statisticians; two Regional Directors; the Chief Financial Officer; and the Assistant Statisticians of the Office of the Statistician and External Engagement, the Human Resources Branch and the Information Infrastructure Branch. ELG and SMG jointly meet periodically to discuss strategic issues and to review organisational performance.

► **Protective Security Management Committee**

The Protective Security Management Committee oversees the ABS's comprehensive security framework, ensuring that both protective and IT security are maintained. The committee is a key means of ensuring that the ABS meets its legal requirement not to divulge identifiable information and to make sure that there is policy to meet the security and privacy related requirements of legislation including the *Public Governance, Performance and Accountability Act 2013*; *Census and Statistics Act 1905*; *Australian Bureau of Statistics Act 1975*; *Privacy Act 1988*; and *Crimes Act 1914*.

Audit and review

ABS's internal audit and review programs provide independent assessment, objective assurance and advisory services to the Statistician and senior management.

These services assure the Statistician that controls are adequate and meet public accountability requirements and other better practice guidelines; and assist the Statistician and senior management to improve operations and reduce risks.

The audit and review programs are overseen by the Audit Committee, which meets the requirements of section 45 of the *Public Governance, Performance and Accountability Act 2013*.

The objectives of the Audit Committee are to provide assurance to the Statistician that the ABS has in place a comprehensive control framework for its business systems, including those used to support statistical activities; risk management processes/activities; external accountability responsibilities; and legislative obligations. The Committee also provides assurance that the control framework is working effectively. The Committee may also identify significant issues of concern or non-compliance for the attention of the Statistician.

Our commitment to reconciliation and diversity

ABS Reconciliation Action Plan

The ABS is committed to reconciliation. In line with the ABS mission, the ABS assists and encourages informed decision making, research and discussion among Aboriginal and Torres Strait Islander peoples, their communities and organisations, and within governments and the wider community. It does this by leading and coordinating statistical activities involving and relating to Aboriginal and Torres Strait Islander peoples.

The ABS Reconciliation Action Plan (RAP) sets out actions the ABS is taking to:

- ▶ increase the recruitment, retention and development opportunities for Aboriginal and Torres Strait Islander peoples in the ABS
- ▶ build the capability of ABS employees to respond effectively to Aboriginal and Torres Strait Islander peoples and communities through respect and understanding of Aboriginal and Torres Strait Islander peoples and culture
- ▶ ensure that ABS policies, programs and services effectively respond to Aboriginal and Torres Strait Islander peoples and communities
- ▶ develop the statistical literacy skills of Aboriginal and Torres Strait Islander peoples and communities to enable them to make informed decisions about themselves, their families and their communities.

The ABS's commitment to reconciliation focuses on three key areas:

- ▶ relationships (building local connections)
- ▶ respect (building cultural competency)
- ▶ opportunities (increasing Aboriginal and Torres Strait Islander employment and statistical literacy).

To support continuous improvement and monitoring of the RAP, an Aboriginal and Torres Strait Islander Reference Group has been established. This group contributed to the development of the RAP and continues to provide periodic reviews and feedback on the progress of the RAP. The group also assists with the continued development and positive promotion of the RAP. For more information, including the detailed action plan, please refer to the *ABS Reconciliation Action Plan, 2013-16* (cat. no. 1011.0).

ABS Workplace Diversity Action Plan

The ABS supports all forms of diversity, such as differences in gender; age; language; ethnicity; cultural background; disability; religious beliefs; sexual orientation; gender identity; family responsibilities; educational level; life experience; work experience; socio-economic background; and personality.

Workplace diversity is about creating a respectful and inclusive work environment that values and uses the contributions of all employees, as well as addressing disadvantage or discrimination experienced by particular diversity groups within the workplace. The ABS Workplace Diversity Action Plan is built on the principle that a diverse workforce is innovative, productive and improves services. The ABS seeks to be representative of the Australian community and to make the fullest possible use of the range of diverse backgrounds, perspectives and talents of all our staff.

The ABS has identified four overarching strategies to achieve positive outcomes from increased workplace diversity:

1. strengthen a respectful and inclusive work environment and culture
2. improve our ability to attract, recruit and retain people of diverse backgrounds and targeted under-represented diversity groups
3. improve our understanding of workplace diversity issues and increase the analysis and utilisation of workplace diversity metrics
4. as a statistical services provider, ensure accessible services, products and data collection practices are provided for people with disability and people from culturally and linguistically diverse backgrounds.

Progress on the deliverables of the ABS Workplace Diversity Action Plan is regularly reviewed and reported on annually. For more information, including the detailed action plan, please refer to the *ABS Workplace Diversity Action Plan, 2013-17* (cat. no. 1010.0).

Our products and services

In order to inform decision-making, research and discussion within governments and the community, the ABS provides a range of information solutions which cater for a wide range of customers and their evolving information requirements.

Each year the ABS produces over 800 official statistical releases, as well as a range of research, analysis and data services, to describe the population, economy, environment, and society. The full range of official statistical releases is available through the ABS website, together with information to assist researchers, government, and the community to better understand ABS statistics and how they are produced. The ABS also publishes information regarding any important changes to ABS topics, concepts, sources or methods.

The range includes:

- ▶ online dissemination services including the ABS website, Facebook and Twitter
- ▶ output database products such as TableBuilder, ABS.Stat and DataAnalyser, which provide large volumes of detailed statistical macro and micro data (confidentialised)
- ▶ Confidentialised Unit Record Files available on CD-ROM, via the Remote Access Data Laboratory or ABS Data Laboratory for analysis by researchers
- ▶ access to a defined set of key data through an iPhone/iPad Application 'ABS Stats'.

National information and Referral Service

The National Information and Referral Service (NIRS) is the main entry point to the ABS for basic telephone, email and online enquiries from clients. NIRS also provides a referral service to clients, referring enquiries that cannot be met by NIRS or self-help facilities to other parts of the ABS.

Information and Statistical Consultancy Service

More detailed statistics than those initially released on the website or in database products are available on request. Requests for additional statistical data or analysis/enhanced data presentation are met through the Information Consultancy Service which is provided on a cost recovery basis.

The Statistical Consultancy Service provides help to government departments and statutory authorities in areas such as survey design, questionnaire design, sampling techniques and data analysis.

Data Integration Service

The ABS provides a wide range of data integration and analytical services for statistical and research purposes. This includes complex services such as probabilistic linkage, longitudinal and small area analysis. The ABS is accredited as an Integrating Authority under arrangements for the integration of Commonwealth Government data. This allows the ABS to undertake high risk data integration projects involving Commonwealth data. The ABS undertakes these projects under the strong privacy provisions of the *Census and Statistics Act 1905*. The ABS already has a wide variety of existing datasets in population, social, economic and environmental spheres, and has access to a range of others that could be used in data integration. The ABS uses these to examine the characteristics of groups and the relationships that may exist between variables, such as social, economic and environmental conditions, behaviours and outcomes. This enables further research to improve Australia's understanding of its societal progress and economic development. The ABS has invested in developing staff with the skills and capabilities to undertake the different data integration services offered by the ABS and in developing world-class tools to make microdata available to users whilst protecting privacy.

Statistical Capability Service

Statistical capability services provide activities to improve the statistical skills and knowledge of key target groups within the community. Key services include a suite of web based resources on the ABS website, standard and customised statistical training, and international development programs to build the statistical capability of governments in Asia and the Pacific region.

Outposted Officers

ABS employees are outposted to key Australian Government and state and territory government agencies to support strategic engagement and statistical initiatives between the ABS and those agencies which advance the National Statistical Service. Statistical initiatives can include facilitating access to statistics, enhancing statistical capability, providing data quality advice, and strengthening statistical coordination within host agencies. While many outposting arrangements are ongoing and cover a wide range of strategic issues, others are for short periods to assist with specific technical projects. Outposted officers may also work with other National Statistical Offices to support capability development in an international setting, aligned to the ABS International Relations Strategy.

User-funded Statistics

The ABS produces statistics funded by clients where the work is consistent with its role as a national statistical agency, and aligns to the functions stipulated in the *Australian Bureau of Statistics Act 1975*. All user-funded statistics are publicly disseminated as part of the full range of official statistics. This applies to statistics that are co-funded by the ABS or fully funded by the client. User-funding enables the ABS to expand the information available to Australians by providing a responsive statistical service.

ABS Charging Policy

Policy and Principles

Open access to official statistics on the economic and social condition of a country and its population is an essential element of a democracy. The ABS attaches considerable importance to easy and widespread access by all levels of governments and the community to the statistics it compiles.

The Australian Government Cost Recovery Guidelines stipulate that a basic set of information should be provided to the community free of charge as 'public goods' and other information, beyond the basic information set, should be cost recovered. Consistent with this policy, the ABS dissemination principles ensure that:

- ▶ all customers, including the general community, have free and easy access to a basic set of official statistics - mainly through the ABS website, but also using channels such as Facebook and Twitter and an iOS app
- ▶ where it is cost effective to do so, the costs of producing and providing information services that are additional to the basic set of official statistics are recovered from the customers.

Objectives

The objectives of the ABS charging policy are to:

- ▶ reduce the need for the general taxpayer to bear those elements of the cost of the statistical service which have a specific and identifiable value to particular customers
- ▶ enable the demand for ABS information to be used as one indicator of how ABS resources should be used
- ▶ encourage users to address their real needs for ABS statistical information.

Community service obligation

The ABS fulfils the community service obligation for statistics by:

- ▶ including all published ABS information in the basic set, available on the ABS website free of charge
- ▶ providing a range of self service tools for generating statistical tables from a variety of data sources including the 2011 Census of Population and Housing
- ▶ providing a range of self service statistical literacy resources via the ABS website free of charge
- ▶ offering a National Information and Referral Service which provides free information over the phone for straightforward enquiries.

Approaches to cost recovery

Products in the basic set may be provided in alternative formats on request by the customer. Pricing is based on the marginal costs incurred in producing them in these formats.

For products beyond the basic set, such as customised extraction of data, pricing is based on incremental or avoidable costs. The ABS may also price a limited range of products on a commercial basis. This occurs where such products and services compete, or may compete, with similar products provided by others.

Most of the ABS's free, subscription and customised data outputs (except confidentialised unit record files) are covered by Creative Commons licensing. This licence empowers users to use or re-purpose ABS data without seeking the ABS's permission, provided that the ABS is attributed as the source for that information.

The ABS leadership team

Acting Australian Statistician



Jonathan Palmer

Deputy Australian Statisticians



Peter Harper
Population, Labour & Social Statistics Group



Ian Ewing
Economic & Environment Statistics Group



Trevor Sutton
ABS 2017 Group



Chris Libreri
(A/g) Strategies, Services & Technology Group

First Assistant Statisticians



Paul Jelfs
Social, Health & Labour Division



Gemma Van Halderen
Population, Education & Data Integration Division



Michael Davies
Macroeconomic Statistics Division



Bruce Hockman
Business, Industry & Environment Statistics Division



Jenine Borowik
Program Delivery Division



Patrick Hadley
Technology Services Division



Siu-Ming Tam
Methodology & Data Management Division

Regional Directors



Judy Hensen
Victoria



AJ Lanyon
Queensland



Tom Joseph
Western Australia



Andrew Henderson
Tasmania



Bill Allen
New South Wales



Celia Moss
Northern Territory



Dean Bowley
South Australia



Cassandra Gligora
Australian Capital Territory

**Assistant
Statisticians**



David Zago
Social Conditions
Branch



Michelle Marquardt
(A/g) Health & Disability
Branch



Bernard Williams
Labour Branch



Lane Masterton
Technology Engagement
& Design Branch



Paul Schubert
Statistical Services
Branch



Bindi Kindermann
(A/g) Education & Data
Integration Branch



Graeme Brown
Demography, Regional
& Social Analysis
Branch



Michael Beahan
Industry & Productivity
Statistics Branch



Paul Roberts
(A/g) National Accounts
Branch



Paul Mahoney
International &
Government Finance
Accounts Branch



Marcel van Kints
Prices Branch



Adrian Bugg
Data Acquisition &
Collection Branch



Christine Williams
Environment Statistics
& Integration Branch



Greg Amie-Fong
Program Management
Office



Merry Branson
Customer Services
Branch



Lewis Conn
Office of the Statistician
& External Engagement



Duncan Young
2016 Population Census
Branch



Chris Duffy
Technology Applications
Delivery Branch



Jamie Macgregor
Technology Infrastructure
Delivery Branch



Ian Crettenden
Data Standards &
Methods Branch



Gillian Nicoll
Information
Infrastructure Branch



Donna Nicholson
(A/g) Human Resources
Branch



Debra Fogg
Financial Management
Branch



Ric Clarke
(A/g) Analytical Services
Branch



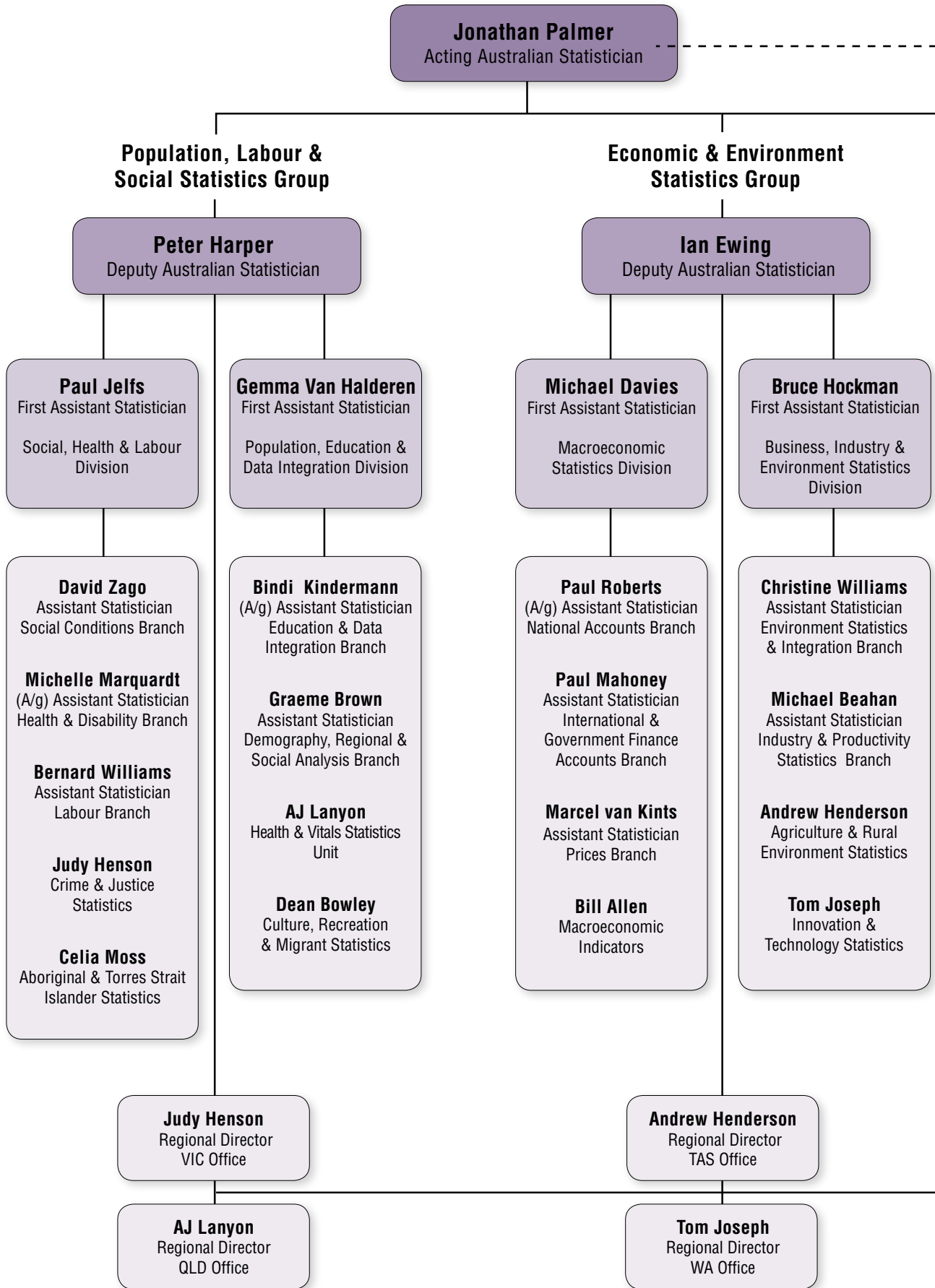
Paul Lowe
Special Advisor,
Population & Social
Statistics Futures Project

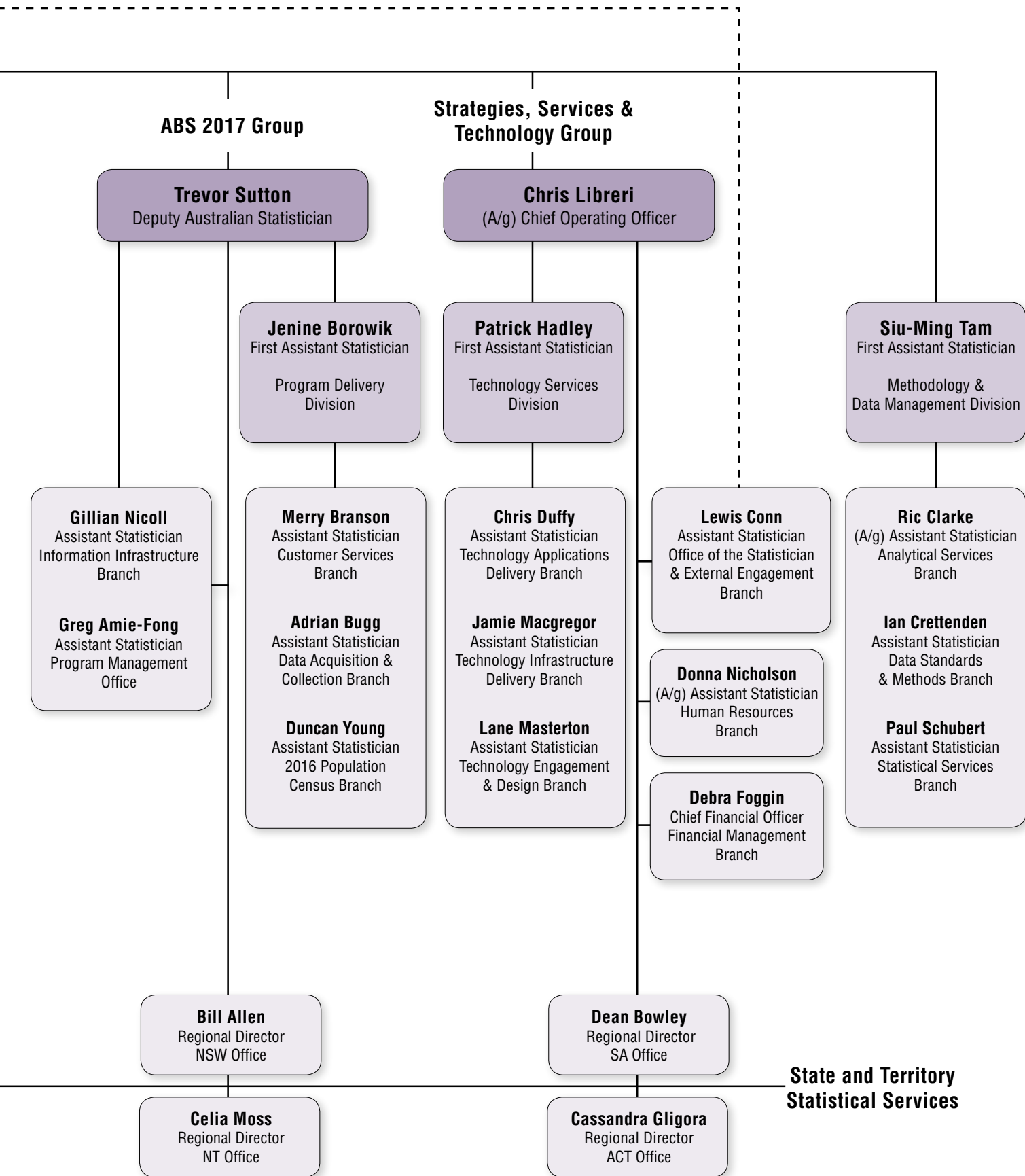


Michael Smedes
Special Advisor, Economic
& Environment Statistics
Group Futures Project

(A/g) = Acting

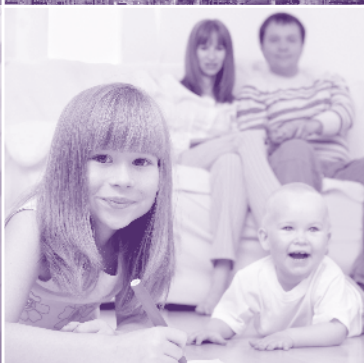
Organisational structure







Statistical Leadership



National Statistical Service Leadership

Program Manager

Lewis Conn
Assistant Statistician
Office of the Statistician
& External Engagement
Branch

Resources

Program Costs	\$m
2014-2015	1.1
2015-2016	1.6
2016-2017	1.1

Objectives

The National Statistical Service (NSS) Leadership program provides a focus within the ABS for strategies aimed at strengthening and extending the NSS, which is the community of government agencies working together to build a rich statistical picture for a better informed Australia. Consistent with the ABS's legislated responsibilities as Australia's central statistical authority, the NSS Leadership program identifies opportunities for the ABS to partner with other organisations to improve the quality and value of their data and to embed awareness of statistical information as a strategic and enabling asset. Targeted outcomes of the NSS Leadership program are:

- ▶ optimising and improving Australia's essential statistical assets for evidence-based policy development, evaluation and research
- ▶ improved statistical infrastructure and services
- ▶ increased statistical capability of producers and users of statistics.

Outputs

Outputs of the program for 2014-15 to 2017-18 will be:

- ▶ release of Phase 2 of the Essential Statistical Assets (ESA) for Australia initiative which provides quality assessments for each of the 74 essential statistics on the 2013 ESA list
- ▶ development of Phase 3 of ESA, producing a list of essential statistical infrastructure for the national statistical system
- ▶ progression of the Crisp revisited project and National Statistics Policy to improve the efficiency and effectiveness of the national statistical system
- ▶ participation in and promotion of initiatives to improve the use of official statistics, for example, data.gov.au, GovHack and coordination of the NSS Seminar Series
- ▶ support of the external statistical governance forums to advance NSS priorities and the use of statistical information:
 - ▶ Australian Statistics Advisory Council
 - ▶ State Statistical Forum
 - ▶ Australian Government Statistical Forum
- ▶ strategic engagement with stakeholders to advance statistical information access and sharing across government agencies
- ▶ supporting and coordinating resources to help official statisticians, including statistical literacy resources hosted on the Understanding Statistics web page; a national external statistical training program and a Data Quality Online Tool to enable data providers; and users to better communicate and understand data quality.

Developments

Stakeholder engagement by the NSS Leadership program for 2014-15 will focus on the following key strategic priorities for advancing the NSS:

- ▶ the transformation of information management infrastructure to establish an environment in which Australian governments and the community can easily find, access, and combine statistical information
- ▶ unlocking the potential of key administrative data holdings held by governments for statistical data integration and research, and enhancing the official statistics evidence base for decision-making purposes
- ▶ progressing, in a highly consultative way, the Essential Statistical Assets (ESA) for Australia initiative to protect and prioritise government investment in official statistics
- ▶ enabling statistical information to be integrated with location information
- ▶ enhancing the level of statistical capability across government agencies to support improved use of statistical information in policy formulation and evaluation
- ▶ continuing to build support for the Integrated Statistical Capability Development Framework across the NSS, providing customised training, both national and international including eLearning options and blended learning initiatives.

The main medium-term developments of the program are to:

- ▶ strategically position external statistical governance fora to focus on NSS priority areas and provide opportunity for engagement on key policy issues - ongoing
- ▶ enhancing strategic engagement to strengthen relationships between key official data producers and policy makers to invest and value high quality statistics and statistical capability as strategic assets - ongoing
- ▶ contributing to whole of government open data initiatives, for example, through support of and collaboration with data.gov.au - ongoing.

State and Territory Statistical Services

Program Manager

Regional Directors

Resources

Program Costs	\$m
2014-2015	8.7
2015-2016	7.9
2016-2017	7.8

Objectives

The ABS builds partnerships with the states and territories to assist and encourage well-informed policy and decision making. This role is set out in ABS legislation and is supported by formal agreements with state and territory governments.

The State and Territory Statistical Services (STSS) Program advances the ABS objective of an expanded and improved National Statistical Service (NSS) within states and territories. State jurisdictions are key data custodians, providers and data users. For this reason, ABS strategies to promote data integration and develop statistical capability and infrastructure rely heavily on strong relationships between the STSS and state and territory governments. The STSS supports other areas of the ABS which are engaging with the states and territories to improve use of administrative data, understanding of key statistical concepts and standards, and in building statistical capability.

The role of the STSS is to work with the state and territory governments and communities, and to support other areas of the ABS who are engaging with these stakeholders, to:

- ▶ progress the NSS
- ▶ advocate for state and territory statistical priorities
- ▶ develop statistical capability and infrastructure
- ▶ improve the quality, visibility, utility and use of administrative data
- ▶ coordinate jurisdictional activities for ABS programs, such as Demography, Census and community engagement.

Outputs

The main outputs of the STSS program are:

- ▶ advancement of NSS objectives in each state and territory
- ▶ progress on key statistical initiatives in collaboration with state and territory governments, based on priorities determined by the State Statistical Forum
- ▶ provision of advice and intelligence to ABS national programs on relevant state and territory statistical priorities and emerging issues, including where states and territories are key data providers
- ▶ collaboration on statistical projects designed to meet high priority needs of individual state and territory governments
- ▶ intelligence about emerging state and territory demographic issues
- ▶ promotion of the importance of the Census, and input into planning for operations of the Census in intercensal years
- ▶ coordination of the Indigenous Community Engagement Strategy leading to improved statistical literacy and statistical outcomes
- ▶ support for external statistical governance and data development forums.

Developments

The main medium-term developments in the program are to:

- ▶ work with state and territory data custodians and users to determine supporting elements of statistical infrastructure necessary for the creation and maintenance of datasets which have been identified by the Essential Statistical Assets for Australia initiative - due 2014 -15
- ▶ support the widest possible use by governments and the community of 2011 Census data and assist in ABS preparation for the upcoming 2016 Census - ongoing until 2016
- ▶ develop statistical infrastructure and the capability of state and territory governments - ongoing
- ▶ progress the statistical priorities endorsed by the State Statistical Forum in collaboration with state and territory governments - ongoing.

International Relations and Regional Statistical Development

Program Manager

Lewis Conn
Assistant Statistician
Office of the Statistician
& External Engagement

Resources

Program Costs	\$m
2014-2015	3.3
2015-2016	3.0
2016-2017	1.4

Objectives

The key objectives of the ABS's International Relations Program are to:

- ▶ review and refresh the international relations strategy to ensure ABS maintains a high profile and outstanding reputation as an engaged and active statistical leader
- ▶ shape and influence national and international discussions regarding statistical frameworks, strategies and policies
- ▶ build strong statistical capacity and capability domestically and within Asia and the Pacific Region
- ▶ contribute to Australia's foreign policy objectives and aid development strategies
- ▶ ensure the ABS is managing and mitigating against risks to the organisation
- ▶ monitor performance and compliance across the various components of the program by undertaking audit and review of the program.

Outputs

The main outputs of the ABS International Relations program are to:

- ▶ seek high level collaboration to increase the pool of expertise, and reduce the cost of re-development, in order to harmonise statistical methods, systems and capabilities to achieve mutual benefits across all participating National Statistical Offices (NSOs)
- ▶ implement the ABS International Relations Strategy 2013-2017, taking account of current government priorities
- ▶ support the growing importance of comparable international data in the global economy by meeting the increasing demand to produce high quality, timely and consistent statistics
- ▶ continue to support the focus on Asia and the Pacific, with a model of engagement that supports a proactive voice from this region
- ▶ administer the funding received from the Department of Foreign Affairs and Trade (DFAT) to implement the delivery of high quality statistical improvement initiatives in Asia and the Pacific Region
- ▶ develop an integrated statistical capability framework that supports developing NSOs in meeting international standards in compiling and producing statistics.

Developments

The ABS International Relations program medium-term developments are:

- ▶ collaborative projects with other NSOs, including new dissemination and collections systems, processes for collecting administrative data, and common metadata frameworks - due 2015-16
- ▶ working with the United Nations Economic Commission for Europe on the modernisation of statistical infrastructure - ongoing
- ▶ with the support of DFAT, delivering a range of improved outcomes for statistical initiatives in Indonesia, the Pacific Region and Timor-Leste - ongoing
- ▶ through targeted collaboration, enhancing the ABS's engagement with key countries in Asia such as China, India and South Korea. Collaboration provides an opportunity to increase the pool of expertise, and reduce the cost of re-development via co-designed and co-developed projects - due 2016-17
- ▶ providing strategic advice to support ABS Executive engagement in key international statistical fora such as the Economic and Social Commission for Asia Pacific, United Nations Statistical Commission, and the United Nations Statistical Institute for Asia and Pacific - ongoing.

Statistical Data Integration Leadership

Program Manager

Bindi Kindermann
Assistant Statistician (A/g)
Education and Data
Integration Branch

Resources

Program Costs	\$m
2014-2015	0.6
2015-2016	0.6
2016-2017	0.6

Objectives

The Statistical Data Integration Leadership Program aims to maximise benefits from the use of existing data; minimise risks associated with bringing together datasets of national significance such as the census of population and housing; and maintain the trust of the broader community in the collection and use of personal and business data for statistical and research purposes. The key outcome is to provide a safe and effective environment for commonwealth data integration for statistical and research purposes within Australia.

The activities of the Statistical Data Integration Leadership Program are led by the Secretariat to the Cross Portfolio Data Integration Oversight Board. This board provides strong and consistent governance, methods, policies and protocols around data integration involving commonwealth data for statistical and research purposes. The board is chaired by the Australian Statistician with members being the Secretaries of the Commonwealth Departments of Health, Human Services and Social Services.

Data integration is the joining of data from different sources to enable new insights such as educational and health outcomes, or analyses over a life course. Data integration is a major priority for the national statistical system as demand increases for analyses of integrated and longitudinal population, social, economic and environmental datasets for statistical and research purposes.

The principal stakeholders involved are data custodians, integrating authorities and data users, which include Australian, state, territory and local government organisations, researchers and the community.

Outputs

The main outputs from the program are:

- ▶ secretariat services to the Cross Portfolio Data Integration Oversight Board
- ▶ assessments of applications for accredited Integrating Authority Status
- ▶ policies and strategies for data integration activities involving Commonwealth data for statistical and research purposes
- ▶ guidance materials and tools for data integration activities involving commonwealth data for statistical and research purposes
- ▶ maintenance of the public register of data integration projects and a comments and complaints mechanism
- ▶ communication and engagement activities including seminars and presentations, participation in relevant conferences (particularly those that relate to information sharing across governments, the research sector and the community), and participation in meetings (particularly those across portfolios within governments).

Developments

The main medium-term developments are to:

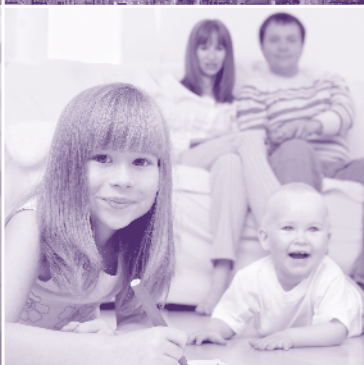
- ▶ work with stakeholders to implement a safe and effective environment for data integration involving Commonwealth data. This includes supporting discussions on the progressive implementation of the Commonwealth arrangements and developing a communication and education strategy - ongoing
- ▶ maintain a register of data integration projects conducted for statistical and research purposes involving Commonwealth data - ongoing
- ▶ engage with the states and territories and academics to encourage a safe and effective environment for data integration involving Commonwealth data for statistical and research purposes - ongoing
- ▶ stay abreast of international best practice for statistical integration activities in order to influence Australian deliberations - ongoing.

References

More information can be found at www.nss.gov.au/dataintegration



Statistical Programs



National Accounts

Program Manager

Paul Roberts
Assistant Statistician (A/g)
National Accounts Branch

Resources

Program Costs	\$m
2014-2015	9.7
2015-2016	7.9
2016-2017	8.5

Objectives

The National Accounts Program provides quarterly and annual data about the level of economic activity, the pattern of economic growth and the structure of the Australian and state economies within a coherent system of concepts and classifications.

The main clients of the program are Australian government agencies (in particular the Australian Treasury); the Reserve Bank of Australia, state and territory government agencies (in particular state and territory treasuries); international organisations such as the International Monetary Fund and the Organisation for Economic Cooperation and Development; economic analysts in the private sector; the media; and academics.

National accounts information is used to formulate and assess government fiscal and monetary macroeconomic policies, assist in allocating Australian Government funds to state governments, formulate industry development policies, undertake financial and business planning, and facilitate international economic comparisons.

Outputs

The main outputs of the program are the quarterly publications *Australian National Accounts: National Income, Expenditure and Product* (cat. no. 5206.0) *Australian National Accounts: Financial Accounts* (cat. no. 5232.0), and the annual publication *Australian System of National Accounts* (cat. no. 5204.0). Together these publications provide comprehensive measures of Australia's macroeconomic performance and economic structure.

The key series relate to current price and volume measures of Australia's Gross Domestic Product broken down into its components. In the quarterly publication, most data are published in seasonally adjusted and trend terms. The publications also show estimates for the national income and capital accounts, and sector accounts such as for households and general government. Data on financial transactions, flow of funds and financial balance sheet positions are provided quarterly and complete balance sheets for sectors and the nation are compiled annually. The annual publication also includes a range of economic data by industry as well as capital stock and productivity estimates.

Annual estimates of economic growth for each state and territory are published separately in *Australian National Accounts: State Accounts* (cat. no. 5220.0). The annual release of Input-Output tables in *Australian National Accounts: Input-Output Tables* (cat. no. 5209.0.55.001) tables provide a detailed articulation of the structure of economic production by detailing the flows of products into and between industries and their use for consumption, investment or export.

The program provides seminars, training courses and other information to assist economic analysts in understanding and using national accounts statistics.

Developments

The main medium-term developments in the program are to:

- ▶ produce a time series of distributional analysis of Household income, expenditure, savings and wealth in the national accounts framework - due October 2014
- ▶ produce an expanded set of institutional sector accounts on a quarterly basis - due December 2014
- ▶ contribute to international research of topics identified as needing further work during the update of the System of National Accounts, with an emphasis on the concept of income and of capital services - ongoing
- ▶ improve the coverage of services industries by increasing the scope of input collections and investigating additional data sources - ongoing
- ▶ improve inputs into productivity estimates, taking on board insights gained from the compilation of these estimates - ongoing.

International Accounts

Program Manager

Paul Mahoney
Assistant Statistician
International & Government
Financial Accounts Branch

Resources

Program Costs	\$m
2014-2015	5.2
2015-2016	5.2
2016-2017	5.4

Objectives

The International Accounts Program provides statistics on Australia's balance of payments, international investment position, merchandise trade and international trade in services. The statistics are compiled from a range of surveys and administrative data sources with merchandise trade statistics derived from records lodged with the Australian Customs and Border Protection Service.

The main users of the international accounts data are economic and industry analysts and policy advisers in Australian government agencies; private sector economic analysts and dealers; academics; the media and international organisations. Australian government agencies that are extensive data users include the Treasury; the Reserve Bank of Australia; the Productivity Commission; Austrade and the Departments of: Foreign Affairs and Trade; Prime Minister and Cabinet; and Industry.

The statistics are used to analyse Australia's external performance; formulate and evaluate macroeconomic policy (including trade policy, trade treaties and foreign investment policy); analyse trends in income, capital flows and patterns of investment into and out of the economy; and undertake international comparisons. The international accounts are inputs to the Australian national accounts, providing the external transactions accounts and the external assets and liabilities components of the national balance sheet.

Outputs

The program produces a range of statistical publications, classifications and methodological information. The key statistical publication is the quarterly *Balance of Payments and International Investment Position, Australia* (cat. no. 5302.0) which presents a comprehensive set of international accounts statistics including chain volume measures for trade in goods and services and seasonally adjusted data for the current account.

Monthly information on exports and imports of goods and services, on a balance of payments basis, is released in *International Trade in Goods and Services, Australia* (cat. no. 5368.0). The publication includes a selection of tables showing merchandise exports and imports data on a recorded trade basis. The program also produces the *Australian Harmonised Export Commodity Classification* (cat. no. 1233.0). Updates to the classification, if required, are released six monthly.

International Merchandise Imports, Australia (cat. no. 5439.0) provides summary information on Australia's merchandise imports for the latest reference month, on a recorded trade basis. Very detailed merchandise trade export and import statistics classified by commodity, country of trading partner, state, industry of origin, and broad economic category can be obtained from ABS Information Consultancy Services.

International trade in services data by partner country and state are released annually, on a calendar year basis, in *International Trade in Services by Country, by State and by Detailed Services Category, Calendar Year* (cat. no. 5368.0.55.004) and on a financial year basis in *International Trade in Services by Country, by State and by Detailed Services Category, Financial Year* (cat. no. 5368.0.55.003). Calendar year international investment position, financial account and primary income data by partner country, and international investment position and financial account data by industry for direct investment are released annually in *International Investment Position Australia: Supplementary Statistics* (cat. no. 5352.0).

Developments

The main medium-term developments in the program are to:

- ▶ improve the processes and data sources used to maintain survey coverage for the Survey of International Investment - due September 2014
- ▶ review sources, methodology, and content of *Characteristics of Australian Exporters* (cat. no. 5368.0.55.006) - due May 2015
- ▶ implement the final Extended Balance of Payments Services Classification contained in the Manual on Statistics of International Trade in Services - due December 2015
- ▶ implement the Harmonised System 2017 update for merchandise trade - due February 2017.

Financial Statistics

Program Manager

Bill Allen
Assistant Statistician
Macroeconomic Indicators

Resources

Program Costs	\$m
2014-2015	2.1
2015-2016	2.1
2016-2017	2.1

Objectives

The Financial Statistics Program compiles statistics on the financial assets, liabilities, borrowing and lending of financial institutions, and on the stocks and flows of finance for the sectors of the economy. The statistics are sourced from several ABS statistical surveys and other data sources including the Australian Prudential Regulation Authority (APRA) and the Australian Taxation Office.

The main users of the program include the main financial policy agencies (including the Treasury and the Reserve Bank of Australia) and financial institutions. Industry associations, analysts and state and territory treasuries are also extensive users of the lending statistics.

The statistics are used for analysis of monetary policy outcomes, for monitoring the flows in the financial system, and for assessing the financial performance of the economic sectors or institutional classes. Housing finance commitment statistics are used as one of the indicators of consumer sentiment and, together with personal, commercial and lease finance commitment statistics, are used as forward indicators of demand in the economy.

Financial statistics are important inputs to the Australian national accounts, predominantly the financial accounts.

Outputs

The program produces the quarterly publication *Managed Funds, Australia* (cat. no. 5655.0), which includes statistics for cash management trusts; superannuation funds; life insurance corporations; public unit trusts; common funds; and friendly societies. Information on securitisation trusts is released quarterly in the publication *Assets and Liabilities of Australian Securitizers* (cat. no. 5232.0.55.001).

The monthly publication *Housing Finance, Australia* (cat. no. 5609.0) includes information on finance commitments for owner occupation and investment housing, as well as balances outstanding on housing finance loans. Finance commitments by banks and other financial institutions are covered, including whether the loans are at fixed or variable rates. The monthly publication *Lending Finance, Australia* (cat. no. 5671.0) provides statistics on commercial, personal and lease finance commitments.

The program also compiles the source data for the quarterly publication *Australian National Accounts: Financial Accounts* (cat. no. 5232.0), which is a component of the Australian National Accounts.

Developments

The main medium-term developments in the program are to:

- ▶ respond to recommendations arising from the Government Financial System Inquiry - due November 2014
- ▶ work with APRA to develop and implement a statistical superannuation collection - due July 2016
- ▶ participate in the review by APRA of their suite of statistical reporting forms for authorised deposit-taking institutions and registered financial corporations - due December 2016.

Program Manager

Marcel van Kints
Assistant Statistician
Prices

Resources

Program Costs	\$m
2014-2015	10.8
2015-2016	10.6
2016-2017	10.4

Prices

Objectives

The Prices Program compiles a number of main economic indicators: the Consumer Price Index (CPI); the Residential Property Price Indexes (RPPIs) and the total value of the dwelling stock; the Wage Price Index (WPI); and a range of Producer Price Indexes and International Trade Price Indexes (PPIs and ITPIs). The program also produces Selected Living Cost Indexes (SLCIs) which include the Pensioner and Beneficiary Living Costs Index (PBLCI) and Analytical Living Cost Indexes (ALCIs) for selected Australian households. In addition, the program uses information papers, seminars and other means to promote a greater understanding of the concepts, sources and methods of price indexes within the local, national and international communities.

The main clients for the program's outputs are the Reserve Bank of Australia, the Treasury, and the Australian Government Departments of: Employment; Education; and Social Services. Australian, state and territory government agencies whose payments are indexed, economic analysts, and the general business community are also clients of the Prices program.

The main uses of the key prices indicators are listed below:

- ▶ CPI is a general measure of household inflation. It is used to produce volume estimates for components of the Australian national accounts; as a basis for indexing government payments, superannuation payments and government taxes and charges; as an input into salary and wage negotiations; and for indexation of government bonds and business contracts
- ▶ RPPIs measure price change of the stock of dwellings over time. The total value of the dwelling stock is also produced. These statistics are used to analyse trends in the housing market and of changes in the value of the housing stock
- ▶ WPI is a measure of wage inflation. It is used: as an input into wage setting negotiations; to produce volume estimates for components of the Australian National Accounts; and for indexation of business contracts
- ▶ PPIs and ITPIs are used: to produce volume estimates for components of the Australian national accounts and balance of payments; as a guide to future inflationary trends; and for indexation of business contracts
- ▶ SLCIs are analytical series used to measure the impact of price changes on the out-of-pocket living costs experienced by employee households, age pensioner households, other government benefit recipient households and self-funded retiree households. Specifically, the PBLCI is used as a basis for indexing pensions and other payments to government benefit recipients.

Outputs

The main program outputs are the following quarterly publications:

- ▶ *Consumer Price Index, Australia* (cat. no. 6401.0)
- ▶ *Residential Property Price Indexes: Eight Capital Cities* (cat. no. 6416.0)
- ▶ *Wage Price Index, Australia* (cat. no. 6345.0)
- ▶ *Producer Price Indexes, Australia* (cat. no. 6427.0)
- ▶ *International Trade Price Indexes, Australia* (cat. no. 6457.0)
- ▶ *Selected Living Cost Indexes, Australia* (cat. no. 6467.0).

Developments

The main medium-term developments in the program are to:

- ▶ produce an updated Concepts, Sources and Methods publication for the PPIs – due August 2014
- ▶ re-reference the WPI to 2011-12 = 100.0 - due February 2015
- ▶ expand the use of transactions data to compile official statistics – due June 2015
- ▶ implement the outcomes of the Review of the Producer and International Trade Price Indexes 2012, including updating the presentation structure, incorporating international trade in services price indexes into the suite of PPIs and ITPIs, and implementing a program of improvements to the coverage of the services industries for PPIs – due 2016.

Public Sector Accounts

Program Manager

Paul Mahoney
Assistant Statistician
International and
Government Finance
Accounts Branch

Resources

Program Costs	\$m
2014-2015	2.7
2015-2016	2.7
2016-2017	2.7

Objectives

The Public Sector Accounts Program provides Government Finance Statistics (GFS) in respect of the Australian, state and territory governments, their public financial and non-financial corporations, universities and local governments. The statistics are compiled predominantly from government accounting systems.

The main users of the program include various Australian Government agencies (in particular the Treasury, the Commonwealth Grants Commission, the Productivity Commission, and the Departments of: Finance; Education; Employment; and Health), state and territory government agencies (in particular state Treasuries), financial market analysts and international agencies.

GFS are used to monitor the financial performance of governments and to inform on the economic impact of government activities. They are also used to assist in the distribution of Australian government grants to state governments.

GFS are an important input to the Australian National Accounts, providing income and expenditure estimates for the public sector.

Outputs

The program produces a number of GFS publications each year, compiled in accordance with the International Monetary Fund's Government Finance Statistics Manual 2001.

The annual publication *Government Finance Statistics, Australia* (cat. no. 5512.0) provides an operating statement, balance sheet and cash flow statement for the most recent year for each of the Australian, state, territory and local governments for the general government, and public non-financial and financial corporations. Key GFS accruals measures such as the net operating balance, net lending/borrowing, and net worth are provided. A cash-based surplus/deficit is also produced.

Other annual publications include:

- ▶ *Government Financial Estimates, Australia* (cat. no. 5501.0.55.001), which provides initial budget forecasts compiled by each jurisdiction on a GFS basis
- ▶ *Taxation Revenue, Australia* (cat. no. 5506.0), which provides revenue from taxation of the Australian Government, the state and territory governments and local government authorities in Australia
- ▶ *Government Finance Statistics, Education, Australia* (cat. no. 5518.0.55.001), which provides statistics on government expenditure in the field of education.

The quarterly publication, *Government Finance Statistics, Australia* (cat. no. 5519.0.55.001), provides operating statements for general government and public non-financial corporations sector aggregates.

Developments

The main medium-term developments in the program are to:

- ▶ implement revised international GFS standards in ABS statistics - due July 2016
- ▶ develop an implementation strategy for introducing Australia's revised institutional sector classification for the Public Sector Accounts (Standard Economic Sector Classifications of Australia 2008) - due July 2016
- ▶ assist the Treasury and/or the Department of Finance in each jurisdiction with implementation and interpretative issues associated with the adoption of the GFS- Generally Accepted Accounting Principles harmonised financial reporting basis represented by the new accounting standard AASB 1049 (Whole of Government and General Government Sector Financial Reporting by Governments) - ongoing
- ▶ provide GFS technical assistance to Pacific Islands countries - ongoing.

Business Indicators

Program Manager

Bill Allen
Assistant Statistician
Macroeconomic Indicators

Resources

Program Costs	\$m
2014-2015	2.8
2015-2016	2.4
2016-2017	2.3

Objectives

The Business Indicators Program is responsible for providing a range of sub-annual main economic indicators, including:

- ▶ monthly statistics of turnover by selected retail industries and the takeaway food services industry
- ▶ quarterly statistics of company profits, inventories, sales and labour costs
- ▶ quarterly statistics of actual and expected new capital expenditure
- ▶ quarterly statistics of actual and expected mineral and petroleum exploration
- ▶ biannual statistics of expected mineral and petroleum expenditure.

These data are essential inputs to the compilation of quarterly and annual National Accounts.

The main clients of the program include the Treasury; the Reserve Bank of Australia; various state and territory departments; banks; industry associations; and other financial analysts and commentators. These clients use the statistics as partial indicators of the National Accounts and as important indicators of economic activity in their own right.

Output

The key statistical outputs of the program are:

- ▶ *Retail Trade, Australia* (cat. no. 8501.0) - monthly
- ▶ *Private New Capital Expenditure and Expected Expenditure, Australia* (cat. no. 5625.0) - quarterly
- ▶ *Mineral and Petroleum Exploration, Australia* (cat. no. 8412.0) - quarterly
- ▶ *Business Indicators, Australia* (cat. no. 5676.0) - quarterly.

Each publication contains both national and state level data and estimates in original, seasonally adjusted and trend terms. *Business Indicators, Australia* provides information on sales, labour costs, company profits and inventories. All of these publications except Mineral and Petroleum Exploration, Australia present current price data by industry. Where appropriate, estimates are presented as chain volume measures.

Developments

The main medium-term developments in the program are to:

- ▶ provide a 'per capita' measure of domestic Retail Trade. An experimental time series will be released early in 2014-15 with further work including the production of a seasonally adjusted and trend series to follow - due September 2014
- ▶ extend Retail Trade's coverage to include service industries, particularly those which have become more significant in household consumption expenditures, and investigate the appropriateness of an activity-based collection versus an industry-based approach. Quarterly experimental estimates of the value of sales of electricity and gas to consumers have been included in *Retail Trade, Australia* (cat. no. 8501.0) since the September 2013 release - due June 2015.

Innovation and Technology Statistics

Program Manager

Tom Joseph
Assistant Statistician
Innovation and Technology

Resources

Program Costs	\$m
2014-2015	2.1
2015-2016	2.2
2016-2017	1.9

Objectives

The Innovation and Technology Statistics Program provides data to assist understanding of the impact of research and experimental development, innovation and new technologies on economic and social outcomes. It provides:

- ▶ measures of the penetration and use of selected new technologies, particularly information and communication technology (ICT), within Australia, for both businesses and households
- ▶ measures of research and experimental development undertaken by businesses, governments, higher education institutions and private not for profit organisations
- ▶ measures of innovation for Australian businesses
- ▶ the Business Longitudinal Database, which is a tool for understanding business activity and possible links to business performance and productivity.

Clients of the program include:

- ▶ Australian government agencies including the Departments of: Communications; Industry; and Education as well as the Reserve Bank of Australia, Productivity Commission and Australian Communications and Media Authority
- ▶ state and territory government departments
- ▶ industry associations; research organisations; universities; and businesses.

Statistics for expenditure on research and experimental development are important inputs to the Australian National Accounts, and accordingly, the ABS National Accounts Program is a key client of the Innovation and Technology Statistics Program.

Output

The program produces a range of statistical outputs, showing:

- ▶ use of ICT by Australian businesses and households
- ▶ internet activity conducted through the Australian Internet Service Provider industry
- ▶ innovation activities undertaken within the Australian economy
- ▶ research and experimental development undertaken by businesses, government, universities and private non-profit organisations
- ▶ selected business characteristics data.

The program is responsible for the collection and publication of Venture Capital and Later Stage Private Equity statistics on an annual basis. This work is user funded.

The program is also responsible for the production of the Business Longitudinal Database Confidentialised Unit Record File (BLD CURF). A new BLD CURF is released as each panel of businesses completes five years of reporting. The program undertakes analytical work using the BLD in the subject field of innovation and technology.

The program contributes to the work of national and international agencies, through input to the review and development of relevant statistical standards and frameworks. Related research papers and discussion papers are made available via the ABS website.

Developments

The main medium-term developments in the program are to:

- ▶ contribute to the finalisation of review of the Organisation for Economic Cooperation and Development (OECD) *Frascati Manual 2002: Proposed Standard Practice for Surveys on Research and Experimental Development* which is being undertaken by the Working Party of National Experts on Science and Technology Indicators - due March 2015
- ▶ in conjunction with key stakeholders, conduct a review of ICT and Digital Economy statistical requirements and work collaboratively to implement recommendations - due September 2015
- ▶ drawing on the Business Longitudinal Database as a base, implement a plan for increasing the capacity to undertake firm-level analysis of micro-economic drivers of performance, productivity, and improving the evidence base for policy development and evaluation - due progressively until September 2018.

Business Demographics

Program Manager

Christine Williams
Assistant Statistician
Environment Statistics &
Integration Branch

Resources

Program Costs	\$m
2014-2015	1.9
2015-2016	1.9
2016-2017	1.8

Objectives

The Business Demography Program is responsible for providing a range of information about the structure, characteristics and performance of businesses in the Australian economy. The program supports the development of robust business definitions and classifications to ensure the production of a consistent framework for all ABS business statistics.

Key external clients of the program are Australian and state government agencies and industry associations.

Government policy analysts and researchers make extensive use of ABS business statistics. Business and business operator counts produced by the program are important for users in understanding the likely impact of particular policies or events. The data are used mainly to monitor the structure and performance of the business sector; and to assess the need for, and effectiveness of, policies relating to the business sector.

In times of disaster (natural or otherwise), information relating to business location, counts, industry and size becomes particularly important in understanding the potential impact of an event and the support required to assist recovery.

Output

The program releases an annual publication *Counts of Australian Businesses, including Entries and Exits* (cat. no. 8165.0) which provides data relevant to users interested in understanding businesses that actively trade in goods or services.

The publication *Counts of Australian Business Operators* (cat. no. 8175.0), first released in 2008, sources data from the Census of Population and Housing (Census) and the Forms of Employment Survey. In October 2013 data collected in the 2011 Census and the 2012 Forms of Employment Survey was released.

Developments

The main medium term developments in the program are to:

- ▶ implement data access options to better support diverse user demand for business demography data - due June 2015
- ▶ review the range of business demography information produced and disseminated to better meet user requirements - due June 2015
- ▶ investigate opportunities to improve regional business demographics through leveraging off work undertaken by the Australian Business Register - due December 2015
- ▶ work with the Australian Business Register to promote coherence between their outputs and ABS business demography statistics - ongoing.

Building and Construction Statistics

Program Manager

Bill Allen
Assistant Statistician
Macroeconomic Indicators

Resources

Program Costs	\$m
2014-2015	2.1
2015-2016	2.1
2016-2017	2.1

Objectives

The Building and Construction Program provides a range of statistics relating to anticipated and actual construction activity including dwelling creation and the formation of other fixed infrastructure. This information is used in compiling the Australian National Accounts, to monitor the performance of the economy and supports the production of population statistics.

The program consists of:

- ▶ monthly planned investment in new building work and anticipated dwelling creation for Australia and smaller regions through the compilation of building approval records
- ▶ construction statistics on activity levels in residential building, non-residential building and engineering construction.

The main clients include: the Treasury; the Reserve Bank of Australia; state and territory agencies; industry organisations and associations; and financial and academic institutions.

As well as being key inputs to the Australian National Accounts, Building and Construction program outputs are widely used for economic monitoring and forecasting and to inform monetary policy. Small area outputs are used in monitoring economic and population changes for regions, being an essential input to regional planning.

Outputs

The main outputs of the program are:

- ▶ *Building Approvals, Australia* (cat. no. 8731.0) – provides building approvals statistics which are a leading indicator of future building activity, including for small areas, on a monthly basis
- ▶ *Construction Work Done, Australia, Preliminary* (cat. no. 8755.0) – contains initial estimates of the amount of construction activity undertaken on a quarterly basis.

Other quarterly outputs include expanded and revised construction activity publications providing substantially more detail and commodity splits than *Construction Work Done*:

- ▶ *Building Activity, Australia* (cat. no. 8752.0)
- ▶ *Engineering Construction Activity, Australia* (cat. no. 8762.0).

Developments

The main medium-term development in the program is to:

- ▶ extend the depth and utility of construction and housing statistics through greater use of administrative data and modelling techniques, and improvement to business processes - ongoing.

Industry Statistics

Program Manager

Michael Beahan
Assistant Statistician
Industry & Productivity
Statistics Branch

Resources

Program Costs	\$m
2014-2015	5.9
2015-2016	6.1
2016-2017	6.1

Objectives

The Industry Statistics Program provides information about the structure, financial operations, performance and production of Australian industries. The information is used to monitor the economy and the business cycle, and support the compilation of the Australian National Accounts and Environmental Economic Accounts.

The program consists of annual economy wide financial statistics from a collection program composed of core and flexible elements that cover the entire economy over a ten year period (in response to specifically identified needs), modelling and analytical work.

The main clients include: the Treasury; the Reserve Bank of Australia; the Productivity Commission; the Department of Industry; the Department of the Environment; Geoscience Australia; the Australian Bureau of Agricultural and Resource Economics and Sciences; the Bureau of Meteorology; state and territory agencies; industry organisations and associations; and financial and academic institutions.

As the program outputs are a key input to the Australian National Accounts and Environmental Economic Accounts, they are widely used for economic monitoring and forecasting.

Outputs

The main outputs of the program are:

- ▶ the annual publication *Australian Industry* (cat. no. 8155.0) - provides national estimates of income; expenses; wages and salaries; operating profit before tax; industry value added, operating businesses; employment; and selected business performance measures at industry division and subdivision levels.

Other outputs include statistical data releases for Australian industry such as:

- ▶ information about Australia's mineral production based on data from state and territory authorities
- ▶ additional detail on the industries covered in the 2012–13 survey program - *Retail and Wholesale Industries, Australia* (cat. no. 8622.0).

Developments

The main medium-term developments in the program are to:

- ▶ release Australian Industry outputs for 2013–14 - due May 2015
- ▶ extend the depth and quality of industry statistics through business taxation and other administrative data, synthetic estimation and/or modelling techniques - ongoing.

Agriculture Statistics

Program Manager

Andrew Henderson
Assistant Statistician
Agriculture & Rural
Environment Statistics
Branch

Resources

Program Costs	\$m
2014-2015	6.9
2015-2016	5.9
2016-2017	8.5

Objectives

The Rural Environment and Agriculture Statistics Program provides reliable, relevant and timely information on the agriculture industry and its contribution to the Australian economy, rural communities and natural resource management, including data on:

- ▶ agricultural commodities produced on farms and their associated value
- ▶ structural information including the number, size and industry of farm businesses
- ▶ natural resource and land management practices undertaken on farms
- ▶ water used by farms for irrigation and sources of water
- ▶ farming demographics
- ▶ the level of foreign ownership of agricultural businesses, land and water assets.

Information from the program supports informed decision-making by Australian and state and territory governments, industry organisations, the academic sector and the wider community on issues important for agricultural policy determination at the national, regional, and international levels. These issues include: the productivity and competitiveness of the agriculture sector, food security and natural resource management. Data from the program directly supports the Australian National Accounts and Water Account.

The ABS engages broadly across government, industry and the wider rural community to ensure the continued relevance of the Rural Environment and Agriculture Statistics Program in the face of a rapidly changing policy environment. Over the past year, the ABS and the Australian Bureau of Agricultural and Resource Economics and Sciences (ABARES) have undertaken a joint project, the National Agricultural Statistics Review (NASR). The NASR is considering all aspects of the National Agricultural Statistical Information System and its ability to inform decision-making in relation to Australian agriculture. Preliminary findings from the first phase of the NASR were released 31 March 2014.

The program continues to support statistical capacity building initiatives internationally in support of the Global Strategy to Improve Agricultural and Rural Statistics.

Outputs

The main outputs from the program are:

- ▶ preliminary findings from the first phase of the joint project with ABARES, published in *National Agriculture Statistics Review - Preliminary Findings, 2013-14* (cat. no. 7105.0.55.003)
- ▶ preliminary and final data on agricultural commodities produced, their value, and water are released annually. This data is available in *Principal Agricultural Commodities, Australia, Preliminary* (cat. no. 7111.0); *Value of Principal Agricultural Commodities Produced, Australia, Preliminary* (cat. no. 7501.0); *Agricultural Commodities, Australia* (cat. no. 7121.0); *Value of Agricultural Commodities Produced, Australia* (cat. no. 7503.0); *Water Use on Australian Farms* (cat. no. 4618.0); and *Gross Value of Irrigated Agricultural Production* (cat. no. 4610.0.55.008)
- ▶ annual data on land management practices undertaken in Australia available in *Land Management and Farming in Australia* (cat. no. 4627.0)
- ▶ foreign ownership of agricultural businesses, land and water entitlements available in *Agricultural Land and Water Ownership* (cat. no. 7127.0)
- ▶ monthly data on livestock slaughtered for human consumption including meat produced available in *Livestock and Meat, Australia* (cat. no. 7218.0.55.001)
- ▶ quarterly data on other livestock products including poultry, meat and wool is available in *Livestock Products, Australia* (cat. no. 7215.0).

Developments

The main medium-term developments in the program are to:

- ▶ undertake the 2015-16 Agricultural Census, which is the largest business collection undertaken by ABS - results will be released in 2017
- ▶ complete the final NASR report outlining the findings of the review, and continue the collaborative working relationship with ABARES to realise learnings from the review - ongoing
- ▶ embed ongoing consultation and review processes into the work program, to help develop the 2016-22 statistical program - ongoing
- ▶ continue to influence corporate improvements to data capture and data delivery systems through increased use and improved functionality of web forms and expanded use of administrative data (particularly geo-spatial data) - ongoing
- ▶ investigate innovative ways of acquiring data to meet user requirements beyond direct survey collection, such as through exploring the use of remote sensing and satellite imagery - ongoing.

Transport Statistics

Program Manager

Michael Beahan
Assistant Statistician
Industry & Productivity
Statistics Branch

Resources

Program Costs	\$m
2014-2015	1.9
2015-2016	1.3
2016-2017	1.2

Objectives

The Transport Program is responsible for producing statistics on transport and transport related activities and undertakes a coordination and liaison role between producers and users of transport data.

The main clients of the program include various Australian government agencies, in particular: the Department of Infrastructure and Regional Development; the Bureau of Infrastructure, Transport and Regional Economics; the Commonwealth Grants Commission; the Treasury; as well as state and territory government agencies; the National Transport Commission; and industry and academic organisations.

Statistics from the transport collections are used to assist in policy and planning deliberations by governments and transport organisations, particularly in the areas of long term planning, the regulation of road transport operators, and for accident exposure and fuel use analysis. Information about the vehicle fleet provides a measure of the stock of vehicles registered for road use at a point in time and supports the study of links between demographic change and vehicle ownership and use. Statistics on new motor vehicle sales provide an economic indicator of consumer confidence.

Outputs

The outputs of the program are:

- ▶ monthly publication of *Sales of New Motor Vehicles, Australia* (cat. no. 9314.0), a major economic indicator
- ▶ biennial publication of the *Survey of Motor Vehicle Use, Australia* (cat. no. 9208.0)
- ▶ annual publication of *Motor Vehicle Census, Australia* (cat. no. 9309.0).

Developments

The main medium-term developments in the program are to:

- ▶ expand the Survey of Motor Vehicle Use 2014 to enable collection of road freight data - due August 2015
- ▶ continue to pursue the development of nationally consistent road freight statistics sourced from administrative records - ongoing
- ▶ support the other activities of the Australian Transport Data Action Network as it progresses the Data Action Plan for the Standing Council on Transport and Infrastructure - ongoing
- ▶ provide administrative support for the maintenance of the Transport Metadata Portal - ongoing.

Tourism Statistics

Program Manager

Michael Beahan
Assistant Statistician
Industry & Productivity
Statistics Branch

Resources

Program Costs	\$m
2014-2015	0.3
2015-2016	0.5
2016-2017	0.4

Objectives

The Tourism Program is responsible for producing regular and coherent data on tourism activities. It also undertakes a coordination and liaison role between tourism statistics users and other areas of the ABS that produce tourism related statistics. The program conducts the Survey of Tourist Accommodation (STA) and compiles the Australian Tourism Satellite Account (TSA). Both the current Survey of Tourist Accommodation and the Tourism Satellite Account are funded by the Australian Trade Commission (Austrade). The Tourism Program is also responsible for the development and maintenance of tourism frameworks, standards and concepts.

Tourism related data produced by other areas of the ABS includes Overseas Arrivals and Departures data, tourism related exports and imports indicators and data collected under the Industry Statistics program.

The main clients of the program are: Austrade; state and territory tourism departments; tourism industry associations; academic and research groups; and marketing and consultancy bodies.

Tourism statistics are used to assist in economic analysis and policy formation relating to tourism, to measure the size and structure of the tourism industry and related industries, to allocate state and territory government funding to regional areas, and for local government planning and investment. The STA data are an input into the policy and planning activities of government and industry, particularly in relation to tourism activity in regional areas. The TSA shows the contribution of tourism to major economic aggregates such as gross domestic product. This data supports policy development related to the Tourism 2020 goals.

Outputs

The key outputs of the program include *Tourist Accommodation, Australia* (cat. no. 8635.0) and the *Australian National Accounts: Tourism Satellite Account* (cat. no. 5249.0). *Tourist Accommodation, Australia* provides detailed demand and supply data relating to hotels, motels and guest houses with 15 or more rooms, and serviced apartments with 15 or more units. One of the most valuable aspects of this data is the fine level of geographic detail for which estimates are available.

The program also actively assists in user education relating to *Australian National Accounts: Tourism Satellite Account* (cat. no. 5249.0), *Overseas Arrivals and Departures, Australia* (cat. no. 3401.0), tourism related services exports and imports indicators in *International Trade in Goods and Services, Australia* (cat. no. 5368.0) and *Balance of Payments and International Investment Position, Australia* (cat. no. 5302.0), and the tourism related outputs issued by the Industry Statistics program.

Developments

The main medium-term developments in the program are to:

- ▶ work with users to deliver a revised Survey of Tourist Accommodation that best meets user needs within existing constraints - due December 2015
- ▶ continue research program for improving Tourism Satellite Account estimates - ongoing
- ▶ contribute to the United Nations World Tourism Organisation and other international bodies as they examine statistical standards and classifications - ongoing.

Environment Statistics

Program Managers

Christine Williams
Assistant Statistician
Environment Statistics &
Integration Branch

Resources

Program Costs	\$m
2014-2015	1.8
2015-2016	1.8
2016-2017	1.8

Objectives

The Environment Statistics Program contributes to meeting the demand for comprehensive and coordinated information about Australia's environment, focusing on key themes such as water, energy and land management. The complex inter-relationships between the environment, society and the economy require integrated information, which is a key focus of the program.

The program actively engages with partners to understand information needs and coordinate the development of statistics from the wide range of data available in this field.

Use of environment statistics is varied and includes the formulation of policies, economic analysis, research, forecasting and meeting international reporting obligations. Clients of the program include:

- ▶ Australian Government departments of Environment; Agriculture; Industry; Innovation, and the Treasury
- ▶ Australian Government agencies such as the Australian Bureau of Agricultural and Resource Economics and Sciences; the Murray Darling Basin Authority; the Bureau of Meteorology; and Geoscience Australia
- ▶ state and territory government departments with environment or energy responsibilities
- ▶ academic and research organisations, environmental groups, businesses and individuals.

Outputs

The main outputs of the program are:

- ▶ continued collaboration for development of the remaining volumes of the United Nations' System of Environmental Economic Accounts (SEEA), which brings environmental and economic information together within a common framework
- ▶ production of annual environmental economic accounts according to the SEEA framework: *Australian Environmental-Economic Accounts* (cat. no. 4655.0), *Energy Account, Australia* (cat. no. 4604.0); *Water Account, Australia* (cat. no. 4610.0); *Land Account: Land Account: Great Barrier Reef Region, Experimental Estimates* (cat. no. 4609.0.55.001); *Land Account: Victoria, Experimental Estimates* (cat. no. 4609.0.55.002); and *Land Account: Queensland, Experimental Estimates* (cat. no. 4609.0.55.003).

Developments

The main medium-term developments in the program are to:

- ▶ improve the quality and depth of detail of existing water and energy accounts - ongoing
- ▶ work with key stakeholders to demonstrate applications of SEEA and promote its use as a framework for integration of socio-economic and environmental information to inform policy development and decision making - ongoing
- ▶ investigate further expansion of the environmental accounting program that could encompass regular ecosystems, environmental expenditure, environmental goods and services and environment industry accounts - ongoing
- ▶ collaborate with other government agencies around environmental information initiatives such as; the National Plan for Environmental Information, the National Greenhouse and Energy Reporting system, the Great Barrier Reef Marine Park Authority Outlook Report, and the National Waste Report - ongoing
- ▶ provide statistical support and training to Asia and the Pacific region on the implementation of the SEEA - ongoing.

Demography

Program Manager

Graeme Brown
Assistant Statistician
Demography, Regional &
Social Analysis Branch

Resources

Program Costs	\$m
2014-2015	2.6
2015-2016	2.5
2016-2017	2.6

Objectives

The key objective of the Demography Program is to produce estimates of the recent and projected population and analysis of the components of population change (births, deaths, and migration) and related demographic trends. These data are provided at the national, state, territory, and regional level, as well as for the Australian Aboriginal and Torres Strait Islander population.

These statistics are produced to:

- ▶ meet a range of legislative requirements that make reference to population estimates
- ▶ assist in the formulation and monitoring of government policies, and in the planning and administration of government programs
- ▶ enable planning and market analyses by businesses and community organisations
- ▶ enable research and analyses by governments, businesses, academic institutions and others into the causes and consequences of population change.

Reflecting the use of population estimates for electoral and funding purposes, the main clients of the program are: Australian and state/territory-level electoral commissions, treasuries, and grants commissions. Within the ABS, demographic estimates and projections are the basis for population survey benchmarks. Other clients include agencies concerned with issues associated with migration and multicultural affairs; local area planning; health; education; the Australian Aboriginal and Torres Strait Islander peoples; family and community services; the environment; and international tourism. The program also works to build capacity of government agencies to understand and use demographic data and statistics, and supports the development of civil registration systems in Asia and the Pacific region.

Outputs

The program's key outputs are population estimates published in *Australian Demographic Statistics* (cat. no. 3101.0). The program produces estimates of the total population by age; sex; country of birth and geographical distribution; estimates of the Aboriginal and Torres Strait Islander population; and estimates of families and households.

Regular statistics are also produced on births; fertility rates; deaths; mortality rates; life expectancy; international migration as well as interstate and internal migration. Projections of population, families and households according to specified demographic assumptions are published on a regular basis. Population benchmarks are provided for use in the ABS and other population surveys. Regular statistics based on the movements of overseas arrivals and departures are also produced.

Major publications include:

- ▶ *Australian Demographic Statistics* (cat. no. 3101.0)
- ▶ *Births, Australia* (cat. no. 3301.0)
- ▶ *Deaths, Australia* (cat. no. 3302.0)
- ▶ *Regional Population Growth, Australia* (cat. no. 3218.0)
- ▶ *Population Projections, Australia* (cat. no. 3222.0)
- ▶ *Household and Family Projections, Australia* (cat. no. 3236.0)
- ▶ *Estimates and Projections, Aboriginal and Torres Strait Islander Australians* (cat. no. 3238.0)
- ▶ *Australian Historical Population Statistics* (cat. no. 3105.0.65.001).

Developments

The main medium-term developments in the program are to:

- ▶ support the Australian Electoral Commission by supplying statistical information required for a round of electoral redistributions - due late 2014
- ▶ release *Australian Historical Population Statistics* (cat. no. 3105.0.65.001) with updated information beyond 2008 - due late 2014
- ▶ develop Regional Internal Migration Estimates as a partnership project between ABS and state government planning agencies - due December 2014
- ▶ release Household and Family Projections based on the 2011 Census data - due June 2015
- ▶ explore the feasibility of improving comparability for Aboriginal and Torres Strait Islander life tables for 2010-2012 for Australia and states/territories - ongoing
- ▶ assess the quality of Census and Post Enumeration Survey data, as key inputs into population estimates, through the testing phases in the lead-up to the 2016 Census - ongoing
- ▶ conduct investigations into the feasibility of improving Aboriginal and Torres Strait Islander population estimates and projections including projections by all remoteness categories and preliminary backcast population estimates - ongoing
- ▶ improve harmonisation of births and deaths data, enhance coordination between data providers, and improve connections with data users through the newly formed National Civil Registration and Statistics Improvement Committee - ongoing.

Labour Statistics

Program Manager

Bernard Williams
Assistant Statistician
Labour Branch

Resources

Program Costs	\$m
2014-15	7.2
2015-16	6.9
2016-17	7.9

Objectives

The Labour Statistics Program provides evidence to support labour market, economic and social analysis through the provision of high quality labour statistics in a timely, efficient and effective manner. The program provides information about the structure and performance of the labour market, including statistics on labour supply (such as labour force participation, employment, hours worked, unemployment and labour underutilisation); labour demand (job vacancies); employment conditions and working arrangements; employee earnings and labour costs; and workplace relations.

Labour statistics are used extensively in the analysis, evaluation, and monitoring of the economy; the labour market; and a wide range of government policies and programs (such as those relating to employment, income support and workplace relations). Statistics on labour costs and aggregate hours worked are also used in compiling the Australian National Accounts.

The main clients of the program are Australian government agencies (including the Treasury, the Reserve Bank of Australia; the Fair Work Commission; the Productivity Commission; the Commonwealth Grants Commission; and the Departments of Employment; Education; and Social Services); state and territory government agencies; industry associations; trade unions; and academic researchers.

Outputs

Key statistics on labour supply; including labour force participation; employment; unemployment; underutilisation and hours worked are published either monthly in *Labour Force, Australia* (cat. no. 6202.0) and *Labour Force, Australia detailed electronic delivery* (cat. no. 6291.0.55.001); or quarterly in *Labour Force, Australia, detailed quarterly* (cat. no. 6291.0.55.003). Statistics on particular aspects of labour supply; such as labour mobility; underemployment; job search experience; retirement and retirement intentions; barriers and incentives to labour force participation; and marginal attachment to the labour force; are published periodically.

Statistics on job vacancies, i.e. unmet demand for labour, are released quarterly in *Job Vacancies, Australia* (cat. no. 6354.0). Statistics on characteristics of employees' working arrangements; working time arrangements; forms of employment; independent contracting; and labour hire are also published periodically. Statistics about industrial relations include quarterly industrial disputes, and trade union membership and award and agreement coverage every two years.

Statistics on average weekly earnings of employees are released biannually in *Average Weekly Earnings, Australia* (cat. no. 6302.0). Employee earnings data are available annually together with employment and demographic characteristics. Earnings and employment data for the public sector are available annually. Distributional data on employee earnings and hours, and occupational earnings are available every two years. Data on major labour costs are produced on an infrequent basis.

The publication *Australian Labour Market Statistics* (cat. no. 6105.0) is produced on an irregular basis and supports the release of analytical data series, such as volume measures of labour underutilisation, and feature articles on current labour market issues.

The program also manages infrastructure and generalised processes required for running household collections, supports social statistics programs in their use of these facilities and leads the programs in preparing for future corporate infrastructure and generalised processes.

Developments

The main medium-term developments in the program are to:

- ▶ implement the recommendations from a review of the content of the labour household survey program - progressively from July 2014 to May 2015
- ▶ assess the feasibility of recommendations from the conceptual review of the Industrial Disputes collection and determine an implementation plan - due December 2014
- ▶ assess the relative priorities for employer-based labour statistics to inform a proposal for developing a new integrated labour employer collection from 2018 - due March 2015
- ▶ as part of a proposal to develop improved annual estimates of Aboriginal and Torres Strait Islander peoples, assess alternative estimation methods for remote communities included in the Labour Force Survey - due by June 2015
- ▶ determine the implications for ABS labour statistics of the 2013 International Labour Organisation standards for work, employment and labour underutilisation statistics - due July 2015
- ▶ develop a conceptual model for an Australian Labour Account - due December 2015
- ▶ develop additional conceptual frameworks for labour market statistics (including for workplace relations, non-standard working arrangements and marginal attachment) and a core set of statistical standards for labour household and business survey data items - due June 2016
- ▶ develop a conceptual model for a Linked Employer-Employee Dataset and identify administrative datasets that can be incorporated - due December 2016.

Economic Analysis and Reporting

Program Manager

Michael Beahan
Assistant Statistician
Industry & Productivity
Statistics Branch

Resources

Program Costs	\$m
2014-2015	1.1
2015-2016	1.1
2016-2017	1.1

Objectives

The Economic Analysis and Reporting Program encompasses macroeconomic statistics research, quality improvements, development of new products, economic analysis and reporting and economic integration and advisory functions. This set of functions is designed to improve the ABS's capability to produce high quality macroeconomic statistics in the longer term, while addressing emerging priorities in the short term. Analytical activities in the program range from research projects to improve the accuracy and coherence of existing economic statistics and develop new statistical products, through to operational efforts to increase the efficiency of statistical operations.

The program compiles and publishes aggregate market sector and industry level multifactor productivity statistics and conducts research into the measurement and interpretation of these statistics.

Outputs

Regular publications of the program include:

- ▶ annual productivity statistics presented in *Australian System of National Accounts* (cat. no. 5204.0)
- ▶ *Estimates of Industry Multifactor Productivity* (cat. no. 5260.0.55.002), an annual release that presents a range of productivity estimates at the industry level. Productivity estimates are available on both a value added and gross output basis, presented on an hours worked and quality adjusted hours worked basis.

Additionally, the program produces research or information papers on the following areas:

- ▶ productivity measurement
- ▶ economic analysis using the Business Longitudinal Database and other microdata sets
- ▶ human capital measurement
- ▶ periodic reviews and standards upgrades for macroeconomic statistics.

Developments

The main medium-term developments in the program are to:

- ▶ expand *Estimates of Industry Multifactor Productivity* to include experimental growth accounting decompositions of market sector labour productivity, particularly to show industry's contribution of information technology (IT) and non-IT capital per hour, labour composition, and multifactor productivity; and growth accounts for mining capturing the contribution to output growth from the growth in mineral and energy inputs - due December 2014
- ▶ release a research paper on industry productivity measures extended to include a decomposition of intermediate inputs into energy, materials and services - due mid 2015
- ▶ exploring the suitability of administrative and transactional data in compiling official economic statistics - ongoing
- ▶ undertaking research into aspects of the quality of macroeconomic and financial statistics arising from various reviews - ongoing
- ▶ researching statistical treatments and gathering data for inclusion of emissions trading and carbon credits schemes in economic accounts as they evolve - ongoing.

Regional Statistics

Program Managers

Graeme Brown
Assistant Statistician
Demography, Regional &
Social Analysis Branch

Resources

Program Costs	\$m
2014-2015	0.8
2015-2016	0.8
2016-2017	0.9

Objectives

The Regional Statistics Program aims to understand and support high priority emerging needs for regional statistics by providing relevant analyses, products and services. Regional data may include data relating to cities, urban, rural or remote areas. Activities undertaken under the program include improving access to, and dissemination of, ABS data and data from other sources and developing new indicators.

The activities of the Regional Statistics Program are led by the Rural and Regional Statistics National Centre, and are delivered through collaboration with many areas of the ABS which contribute regional data or analysis on a wide range of topics across economic, environment and social statistics. The program assists policy analysts and researchers to understand the characteristics of regions and change in regions across Australia, with current issues centring on regional population sustainability, local economic development, and service or infrastructure access in regions. All three tiers of government require regional data so ABS actively engages with the Australian Government and state and local governments to understand and support regional data needs. One key focal point for engagement is with the regional development and local government policy portfolio within the Australian Government. The ABS also engages with a wide range of data users to provide professional advice to help them undertake regional data analysis and to understand statistical issues that may arise in regional analyses (e.g. time series or data quality issues).

Over the next four years, a particular focus of this program will be on improving access to regional data through the use of administrative data maintained by Australian, state and territory government agencies with the potential to improve availability of regional data. The centre will continue to support users in the transition to the new ABS standard geography, the Australian Statistical Geography Standard, and in making the best use of the 2011 Census of Population and Housing and other regional data sets to support regional policy analysis.

Outputs

The main outputs of the program are:

- ▶ the *National Regional Profile* (cat. no. 1379.0.55.001), a web-based suite of statistics for regions containing data spanning five years and updated at least annually
- ▶ estimates and indicators from administrative data, such as the Australian Taxation Office personal income tax data, and data on customers of Centrelink and other agencies
- ▶ *Estimates of Personal Income for Small Areas* (cat. no. 6524.0.55.002) and *Wage and Salary Earner Statistics for Small Areas* (cat. no. 5673.0.55.003) - these publications provide annual regional statistics on personal income.

Developments

The main medium-term developments in the program are to:

- ▶ actively engage with key data users to understand emerging priority data needs for regional statistics, with key priorities for the medium term being: regional economic data needs; service access in regions; and information requirements for regions undergoing significant population change and/or flows (e.g. internal migration, long distance commuting such as fly-in-fly-out workers, and tourism) - ongoing
- ▶ build collaborative working arrangements with users and producers of regional statistics - ongoing
- ▶ improve ABS dissemination of information about regional data access and availability through the Regional Topics @ a Glance page on the ABS website, the Data by Region navigator and other appropriate avenues, such as through client networks, conferences, seminars and workshops - ongoing
- ▶ deliver improved National Regional Profile outputs by progressively building in more flexibility for users to more easily access and use whatever data is available for the regions they are interested in - ongoing
- ▶ provide analysis and guidance to demonstrate how the new ASGS can be applied to a range of different regional analysis – such as analysis of local economies, social conditions or service access - ongoing.

Census of Population and Housing

Program Manager

Duncan Young
Assistant Statistician
2016 Population
Census Branch

References

All Census data, Census products and a range of information on the Census is available at: www.abs.gov.au/census

Resources

Program Costs	\$m
2014-2015	33.8
2015-2016	94.8
2016-2017	223.1

Objectives

The Census program conducts a five-yearly Census of Population and Housing. The program aims to accurately and efficiently measure the number and key characteristics of people in Australia on Census night, as well as their dwellings. This provides a reliable basis to estimate the population of each state, territory and local government area, primarily for electoral purposes and for distribution of government funds (Goods and Services Tax revenue) to each state and territory.

The Census is the only Australia-wide source of detailed statistical information on small geographic areas and small population groups (such as groups based on Indigenous origin, ethnicity or occupation) and is used to support planning, administration, policy development and evaluation by governments, businesses and other users.

Outputs

Online products

Census of Population and Housing data can be accessed via a range of online tools, such as:

- ▶ QuickStats and Community Profiles in which Census data are displayed based upon selected location and topic of interest, and can be viewed in different formats including thematic maps or tables
- ▶ TableBuilder Basic and Pro: users can construct their own tables via an interactive web interface across any topics or geography, with output available in tabular, graphical or map based format
- ▶ analytical articles that present easily accessible commentary and social analysis on key topics of policy relevance and public interest
- ▶ Census data packs that are available at Statistical Area 1 level for download
- ▶ Socio-Economic Indexes For Areas that provide summary measures of different aspects of the socio-economic conditions of people in a specific geographic area
- ▶ comprehensive 1% (Basic) and 5% (Expanded) Confidentialised Unit Record Files that contain Census characteristics for a random sample of respondents on a person, family, household and dwelling basis
- ▶ the Australian Census Longitudinal Dataset, which brings together a 5% random sample from the 2006 Census with corresponding records from the 2011 Census using data linkage techniques to explore how Australian society is changing over time. This will be extended to include 2016 data when available.
- ▶ Spotlight and Run That Town which provide interactive and engaging experiences online and on mobile devices to increase engagement with Census data and increase statistical literacy.

Customised data services

Where specialised information needs cannot be met by standard products, customised data services are available through ABS Information Consultancy.

Developments

The main medium-term developments in the program are to:

- ▶ based on public submissions, stakeholder consultation and internal consideration, make recommendations to government on Census 2016 topics - due late 2014
- ▶ test proposed changes to Census procedures and topics through a major test of 100,000 dwellings in August 2014 and a Dress Rehearsal in August 2015
- ▶ submit business case to government for funding in preparation for 2021 Census - 2015-16
- ▶ re-engineer the Census enumeration model to improve the efficiency, effectiveness, data quality and sustainability of the Census - due progressively to March 2016
- ▶ develop enabling infrastructure and processes to support the re-engineered Census enumeration model for 2016, including a comprehensive register of residential addresses to support the use of mail as a contact mechanism for the majority of Australian homes - due progressively to March 2016
- ▶ as part of ABS 2017 Program Delivery Division, develop the foundational components of a range of corporate capabilities that support more efficient and effective data collection - due progressively to March 2016
- ▶ release of datasets, files and publications based on 2016 collection - commencing mid 2017

Health and Disability Statistics

Program Manager

Michelle Marquardt
Assistant Statistician (A/g)
Health & Disability Branch

Resources

Program Costs	\$m
2014-2015	9.5
2015-2016	5.6
2016-2017	4.8

Objectives

The Health and Disability Program provides statistical leadership to inform priorities for improving health outcomes and supporting all people to actively participate in society. Information produced by the program includes statistics relating to health status (including causes of death); health-related services; patient experiences; disability; health risk factors; and impacts on sub-groups within the population.

Statistics on health and disability describe an important aspect of wellbeing, which can impact on people's capacity to participate in the labour force, and more broadly in the community. Changes in the levels of health measures, such as health conditions, risk factors, and disability, can inform both the development of interventions for prevention and care, and the need for related services over time. These statistics support the policy development, program delivery and evaluation of key government and non-government agencies involved in health, community and family services. They provide information on the impacts of programs and service provision, and can be used to assess areas of unmet need. They are widely used in research related to health and community issues.

Clients of the program include Australian government agencies including the Departments of Health and Social Services; the Australian Institute of Health and Welfare; the National Health Performance Authority; state and territory government agencies; academic and research institutions; social welfare organisations providing health and disability services; and the general public.

Outputs

The program produces a range of outputs including: frameworks and standards; statistics, microdata and associated metadata; information/ technical papers; guides; and analytical articles.

Specifically, the outputs of the program include:

- ▶ information on the health status of the population which focuses on particular conditions, risk factors outcomes and population groups
- ▶ information on causes of death based on the International Classification of Diseases - Version 10 published annually in *Causes of Death, Australia* (cat. no. 3303.0)
- ▶ information on the interaction of health services and their clients through the Patient Experience Surveys, published in *Patient Experiences in Australia* (cat. no. 4839.0)
- ▶ information on the structure and operations of the Private Hospital Sector through the Private Hospitals Establishments Collection, published in *Private Hospitals, Australia* (cat no. 4390.0)
- ▶ information on the nature and extent of disability and associated needs for care and support, as well as the circumstances of carers
- ▶ provision of expertise, advice and data in supporting performance monitoring for a range of government activities
- ▶ advice and contributions to key government advisory groups on health and disability information
- ▶ an extensive range of microdata based products including TableBuilder and Confidentialised Unit Record File datasets.

Developments

The main medium-term developments in the program are to:

- ▶ analyse the results from the 2013-14 Patient Experience Survey - due November 2014
- ▶ undertake a review of long term health data needs with key clients - due 2014-15
- ▶ finalise and release biomedical, physical activity and nutrition results from the Australian Health Survey, Aboriginal and Torres Strait Islander wave - due 2014-15
- ▶ develop and conduct the 2014-15 National Health Survey - due April 2016
- ▶ redevelop and undertake the 2015 Survey of Disability, Ageing and Carers - results due late 2016
- ▶ contribute to the development and implementation of the World Health Organisations' International Classification of Diseases - Version 11, for use in mortality and morbidity coding in Australia - ongoing
- ▶ support policy analysts and health researchers' needs by identifying key information gaps and working together with key agencies to create new data sources to fill those gaps - ongoing
- ▶ contribute to international initiatives to improve the comparability of disability statistics - ongoing
- ▶ facilitate the release of causes of death micro-data collaboration with the Australian Coordinating Registry and State and Territory Registrars of Births, Deaths and Marriage - ongoing
- ▶ investigate possibilities to bring together datasets where opportunities exist to better inform policy makers and researchers - ongoing.

Education and Training Statistics

Program Manager

Bindi Kindermann
Assistant Statistician (A/g)
Education and Data
Integration Branch

Resources

Program Costs	\$m
2014-2015	4.2
2015-2016	3.0
2016-2017	2.7

Objectives

The ABS Education and Training Statistics Program aims to understand and support high priority and emerging needs for early childhood education and care, schooling and further education through providing statistical solutions and analysis. The program has a focus on transforming the information base for education and training policy in Australia through the integration of existing administrative and population data sources to provide an integrated, longitudinal and outcomes focussed view of education and training.

The activities of the Education and Training Statistics Program are led by the National Centre for Education and Training Statistics, and are delivered through collaboration with the many areas of the ABS which contribute education and training data such as the Census of Population and Housing.

Key elements of the program include the annual National Schools Statistics Collection, the National Early Childhood Education and Care Collection, and regular household surveys related to child care, education, training and work. The program produces a range of outputs including: frameworks and standards; statistics, microdata and associated metadata; information and technical papers; and analytical articles. This information is used by Australian and state and territory governments for performance assessment and policy making, by organisations involved in educational research and analysis, and by the community to inform decision making.

Outputs

The main outputs of the program are:

- ▶ annual statistics from the National Schools Statistics Collection and the National Early Childhood Education and Care Collection
- ▶ summary publications, Confidentialised Unit Record Files and datacubes from regular household surveys such as the Survey of Education and Work, the Survey of Qualifications and Employment Outcomes and the Childhood Education and Care Survey
- ▶ provision of expertise, advice and data in supporting national performance reporting for a range of government activities
- ▶ a statistical information and dissemination service for education and training statistics; and periodic snapshots on thematic issues
- ▶ advice and contributions to key government advisory groups on education and training information.

Developments

The main medium-term developments in the program are to:

- ▶ compile and publish statistics for the 2014 National Schools Statistics Collection, including progressing a program of work to improve the quality of this collection - due March 2015
- ▶ compile and publish statistics for the 2014 National Early Childhood Education and Care Collection - due March 2015
- ▶ undertake a review of information requirements required for policy in the early childhood education, schools and higher education and training with a view to strengthening the evidence base - due 2015
- ▶ conduct and publish results from the new 2014-15 ABS Survey of Qualifications and Employment Outcomes, formerly known as the Learning and Work Survey, which examines people's qualification history and employment outcomes - due 2016
- ▶ lead the transformation of Australia's education and training statistics by building the evidence base to better understand educational outcomes across the life course - ongoing
- ▶ build collaborative working arrangements with users and producers of early childhood education and care, schooling and further education statistics, including for Aboriginal and Torres Strait Islander peoples – ongoing
- ▶ stay abreast of evolving governance arrangements for education and training policies in Australia to ensure their statistical requirements are coordinated and met, including the Council of Australian Governments (COAG) Education Council and COAG Industry and Skills Council, and the Australian Education, Early Childhood Development and Youth Affairs Senior Officials Committee - ongoing.

Crime and Justice Statistics

Program Manager

Judy Henson
Assistant Statistician
Crime & Justice Statistics
Branch

Resources

Program Costs	\$m
2014-2015	1.9
2015-2016	1.8
2016-2017	1.9

Objectives

The Crime and Justice Statistics Program leads national statistical activity aimed at developing and improving information in this field. The program covers the activities of the National Centre for Crime and Justice Statistics comprising three separate user-funded statistical units: the National Crime Statistics Unit; the National Criminal Courts Statistics Unit; and the National Corrective Services Statistics Unit. These units compile and publish national statistics on recorded crime, courts and corrections, and work to improve the quality of these collections in cooperation with statistical practitioners in the jurisdictions.

The ABS also undertakes a survey program in the field of crime and justice statistics. This includes special purpose surveys aimed at producing rates of victimisation for personal and household crimes, and information on the experience and consequences of crime; as well as more general surveys aimed at understanding the experience of crime within a broader social context.

The main clients of this program are the Australian Government Attorney-General's Department; state and territory agencies responsible for police services, courts administration and corrective services; organisations undertaking criminal justice research; and the community.

Outputs

The main outputs of the program are:

- ▶ indicators of the level and nature of recorded crime victimisation in Australia presented annually in *Recorded Crime - Victims, Australia* (cat. no. 4510.0)
- ▶ annual survey-based victimisation information for selected personal and household offences, presented in *Crime Victimization, Australia* (cat. no. 4530.0). Additional information is collected, on an irregular basis, about other crime types, and crime and safety related perceptions, behaviours and experiences.
- ▶ characteristics of alleged offenders who have been proceeded against by police, including offence information, available annually from 2007–08 in *Recorded Crime - Offenders, Australia* (cat. no. 4519.0)
- ▶ characteristics of defendants, including information on their offences and sentences, available annually in *Criminal Courts, Australia* (cat. no. 4513.0) and characteristics of federal defendants available annually in *Federal Defendants, Australia* (cat. no. 4515.0)
- ▶ information from the National Prisoner Census on people held in adult prisons, including their characteristics, sentence lengths and offences for which they are imprisoned, published annually in *Prisoners in Australia* (cat. no. 4517.0)
- ▶ quarterly *Corrective Services, Australia* (cat. no. 4512.0), which presents information on numbers and rates of people in custody and those serving community-based corrections orders
- ▶ outputs to promote national standards for crime and justice statistics; recent examples include revised classifications such as the Australian and New Zealand Standard Offence Classification and the National Offence Index, the development of a national crime recording standard for police statistics, and the family, domestic and sexual violence conceptual framework
- ▶ outputs to explore different ways of looking at crime and justice statistics, through publication of short articles in the *In Focus: Crime and Justice In Focus* (cat. no. 4524.0).

Developments

The main medium-term developments in the program are to:

- ▶ review and enhance the crime victimisation survey program outputs - due December 2015
- ▶ support government efforts to improve information about cybercrime and statistics relating to prevalence of identity fraud in Australia - due December 2015
- ▶ in collaboration with data providers, improve the range, quality and availability of data collected through administrative systems in police, courts and corrective services sectors with a focus on improving Indigenous identification - ongoing
- ▶ support evidence based development projects across crime and justice areas through assistance and advice to related agencies in key areas of statistical need such as family, domestic and sexual violence and the civil justice system - ongoing
- ▶ support efforts to improve information on substance use, sub-state geography and mental health in relation to crime and justice, recidivism, reappearance indicators for offenders and courts - ongoing.

Aboriginal and Torres Strait Islander Statistics

Program Manager

Celia Moss
Assistant Statistician
Aboriginal & Torres Strait
Islander Statistics Branch

Resources

Program Costs	\$m
2014-2015	3.8
2015-2016	2.4
2016-2017	2.5

Objectives

The Aboriginal and Torres Strait Islander Statistics Program provides information essential to monitoring the social and economic circumstances of Aboriginal and Torres Strait Islander peoples. The program also provides statistical leadership in the collection and analysis of data about Aboriginal and Torres Strait Islander peoples.

The program aims to improve the quality, timeliness and relevance of social, demographic and economic information on the Aboriginal and Torres Strait Islander population.

Key elements of the program include commitment to ongoing engagement with Aboriginal and Torres Strait Islander peoples in ABS planning, collection and dissemination activities; assessing and improving the quality of statistics available from the Census of Population and Housing, surveys and administrative sources; analysis and reporting to explain and improve understanding of data; and development of strategies to maximise the effectiveness and efficiency of data collection and reduce respondent burden on the Aboriginal and Torres Strait Islander population.

Outputs

The main outputs of the program include:

- ▶ the National Aboriginal and Torres Strait Islander Social Survey
- ▶ the Australian Aboriginal and Torres Strait Islander Health Survey
- ▶ statistics on health and wellbeing from other ABS surveys, such as the Survey of Disability, Ageing and Carers
- ▶ Aboriginal and Torres Strait Islander population estimates and associated life-expectancy estimates
- ▶ Census of Population and Housing counts and characteristics, available to a small area level
- ▶ statistical leadership to improve Aboriginal and Torres Strait Islander statistics on population, mortality, health, housing, community services, education, employment, and law and justice
- ▶ ongoing commitment to appropriate engagement with Aboriginal and Torres Strait Islander people through the Indigenous Community Engagement Strategy and Round Table for Aboriginal and Torres Strait Islander Statistics
- ▶ provision of expertise, advice and data in supporting performance monitoring
- ▶ analytical reports and information papers to enhance understanding and use of Aboriginal and Torres Strait Islander statistics, such as *Census of Population and Housing: Understanding the Increase in Aboriginal and Torres Strait Islander Counts, 2006-2011* (cat. no. 2077.0)
- ▶ coordination and promotion of improvements in Aboriginal and Torres Strait Islander statistics from administrative collections.

Developments

The main medium-term developments in the program are to:

- ▶ publish findings from the review of the Indigenous Status Standard conducted in 2013 - due 2014
- ▶ disseminate results from the 2012-2013 Australian Aboriginal and Torres Strait Islander Health Survey - due 2014-15
- ▶ develop and conduct the 2014 National Aboriginal and Torres Strait Islander Social Survey and disseminate results - ongoing to 2016
- ▶ develop an efficient information model for Aboriginal and Torres Strait Islander Statistics, to improve frequency, efficiency and relevance of Aboriginal and Torres Strait Islander statistics - ongoing
- ▶ work with clients to ensure informed use of ABS Aboriginal and Torres Strait Islander statistics - ongoing
- ▶ explore the analytical opportunities of the Australian Census Longitudinal Dataset in relation to Aboriginal and Torres Strait Islander people - ongoing
- ▶ build stronger relationships with Aboriginal and Torres Strait Islander communities and organisations through the Indigenous Community Engagement Strategy, to increase data quality, statistical capability and to manage provider load - ongoing.

Social Conditions Statistics

Program Manager

David Zago
Assistant Statistician
Social Conditions Branch

Resources

Program Costs	\$m
2014-2015	9.0
2015-2016	11.4
2016-2017	10.9

Objectives

The Social Conditions Program provides statistical leadership, standards development and information for a broad picture of the economic and social wellbeing of the Australian population. It provides statistics covering a range of topics including income; expenditure; wealth; housing; homelessness; superannuation; families; gender; time use; volunteering; ageing; and carers.

The program provides design, development, data collection and processing services to support the Growing up in Australia Study (Longitudinal Study of Australian Children), in partnership with the Department of Social Services and the Australian Institute of Family Studies.

The program's statistics are used to support policy development, program delivery and program evaluation of key government agencies involved in social security; taxation; housing; homelessness; community and family services, and issues related to older people; children; youth; men; and women.

Outputs

The program produces a range of outputs including: frameworks and standards; information development plans; statistical products; information/ technical papers; guides and analytical articles.

The main outputs of the program are:

- ▶ from the Survey of Income and Housing, and the Household Expenditure Survey: *Household Income and Income Distribution, Australia* (cat. no. 6523.0); *Household Expenditure Survey, Australia: Summary of Results* (cat. no. 6530.0); *Household Wealth and Wealth Distribution, Australia* (cat. no. 6554.0); *Housing Occupancy and Costs, Australia* (cat. no. 4130.0); *Housing Mobility and Conditions, Australia* (cat. no. 4130.0.55.002); and *Government Benefits, Taxes and Household Income* (cat. no. 6537.0)
- ▶ from the General Social Survey: a profile of the socio-economic characteristics of Australia's adult population with data on a range of social dimensions of the community, published in *General Social Survey: Summary Results, Australia* (cat. no. 4159.0)
- ▶ from the Survey of Disability, Ageing and Carers: *Caring in the Community, Australia, 2009* (cat. no. 4436.0)
- ▶ the six monthly *Gender Indicators, Australia* (cat. no. 4125.0)
- ▶ from monthly population survey components: *Family Characteristics and Transitions, Australia* (cat. no. 4442.0), and *Pregnancy and Employment Transitions, Australia* (cat. no. 4913.0)
- ▶ from the *Census of Population and Housing: Estimating Homelessness, 2011* (cat. no. 2049.0)
- ▶ annual information on registered marriages and divorces granted in *Marriages and Divorces, Australia* (cat. no. 3310.0).

Developments

The main medium-term developments in the program are to:

- ▶ provide support to the 2016 Census of Population and Housing, in particular the development of the Homelessness Enumeration Strategy
- ▶ update and publish statistical standards relating to families, carers, income and housing (from late 2014)
- ▶ develop and publish results from: 2015-16 Household Income and Expenditure Survey (from mid 2017) and 2016 Personal Safety Survey (from mid 2017)
- ▶ publish results from: the 2013-14 cycle of Survey of Income and Housing (from mid 2015); the 2015 Survey of Disability, Ageing and Carers, *Caring in the Community* results (from early 2017) and the 2014 General Social Survey (from mid 2015).

Migrant Statistics

Program Manager

Graeme Brown
Assistant Statistician
Demography, Regional and
Social Analysis Branch

Resources

Program Costs	\$m
2014-2015	0.6
2015-2016	0.7
2016-2017	0.7

Objectives

The Migrant Statistics Program aims to understand and support high priority emerging needs for migrant statistics by providing relevant statistical solutions, including analysis, to inform policy and research in relation to migrants and their settlement outcomes. Key elements of the program include the three-yearly Characteristics of Recent Migrants Survey and data integration projects that use statistical techniques to link migration visa information with other data sets such as the Census of Population and Housing and Australian Taxation Office's Personal Income Tax records. These data integration projects provide new insights about the settlement outcomes of migrants, while being cost efficient in terms of data collection.

The activities of the Migrant Statistics Program are led by the National Migrant Statistics Unit, and are delivered through collaboration with many areas of the ABS which contribute statistics for migrants including the Census of Population and Housing. A key component of the program is the outposting of an ABS officer to the Commonwealth Department of Immigration and Border Protection.

The major stakeholders of the program are the Commonwealth Departments of Immigration and Border Protection and Social Services, and various other Australian and state and territory government agencies which provide services to migrants and ethnic groups.

Outputs

The main outputs of the program are:

- ▶ the *Australian Census and Migrants Integrated Dataset*, which can be accessed as micro data (cat. no. 3417.0.55.001) or viewed through summary tables (cat. no. 3417.0)
- ▶ research papers which explain the findings of data integration studies undertaken to improve the range and quality of migrants data available to users
- ▶ the *Migrant Data Matrices* (cat. no. 3415.0), which help users to find and access data about migrants from the one location on the ABS website
- ▶ the *Guide to Migrant Statistical Sources* (cat no. 3414.0), which contains information about ABS and non-ABS statistical data
- ▶ the three-yearly *Characteristics of Recent Migrants, Australia* (cat. no. 6250.0)
- ▶ the *Perspectives on Migrants* (cat. no. 3416.0) article series which provide analysis of migrant data from the ABS and other sources
- ▶ the Migrant and Ethnicity Topics @ a Glance page on the ABS website
- ▶ statistical activities aimed at promoting and developing national standards such as frameworks, classifications and definitions (e.g. *Standards for Statistics on Cultural and Language Diversity* (cat. no. 1289.0))
- ▶ the coordination and specification of statistical data needs through consultation with data users and, where appropriate, undertaking development work to meet those needs
- ▶ the coordination of ABS activity to ensure that issues relevant to migrants are taken into account in statistical development activities.

Developments

The main medium-term developments in the program are to:

- ▶ build collaborative working arrangements with users and producers of migrant statistics - ongoing
- ▶ develop an ongoing linked data series using Australian Taxation Office Personal Income Tax records and migrant settlement records that will inform about migrant settlement outcomes - feasibility study to be published August 2014
- ▶ assess the quality and potential of administrative data about temporary migrants held by DIBP and DSS with a view to undertaking data integration with the 2016 Census - due October 2014
- ▶ influence the content of ABS collections which are of most interest and highest priority to migrant statistics stakeholders - ongoing
- ▶ review migrant related standards and increase the standardisation of migrant statistical sources through the development and adoption of relevant standards - ongoing.

Analytical Services

Program Manager

Ric Clarke
(A/g) Assistant Statistician
Analytical Services Branch

Resources

Program Costs	\$m
2014-2015	4.8
2015-2016	4.3
2016-2017	4.2

Objectives

Analytical Services Program conducts Research and Development in data access, integration, confidentialisation and analysis methods for traditional and emerging data sources. It also supports business-as-usual (BAU) statistical production in the ABS through the provision of analytical products and methodological advice to subject matter areas. As part of its BAU support function, Analytical Services delivers specialist consultancy services to statistical users in other government agencies.

By providing analytical products and methodological advice, the program contributes to the delivery and continued improvement of ABS statistical outputs. In particular, time series in seasonally adjusted and trend form are an important input to policy formation, decision making and research in government, academia and the private sector. The advancement of data access, integration and analysis methodology underpins the creation of a richer, more dynamic and focused statistical picture of Australia for better informed decision-making by government, business, academia and the Australian public. Dynamic data confidentialisation methods, especially those applied to microdata, are intended to provide robust protection for the confidentiality of information provided by individuals or businesses.

Outputs

The main outputs of the program are:

- ▶ ongoing seasonal adjustment of critical time series used by Australian government economic policy agencies, commonwealth, state and territory governments, and local government service delivery agencies
- ▶ new and innovative analytical products - including conceptual frameworks and models - that enhance the presence of the ABS in the information economy and meet the diverse needs of users of social, economic, environmental and demographic statistics
- ▶ methods, tools and practices that reduce the end-to-end cost and time-to-market of current statistical production, and advance new directions in data access, integration and analysis, particularly those that utilise emerging sources of administrative, transactional, sensor and social media data
- ▶ generalised, architecturally-compliant statistical solutions that can be incorporated into re-engineered business processes and service-oriented metadata-driven enterprise systems developed under the ABS transformation program
- ▶ methodological advice and assistance to users and producers of statistics within the ABS and across the National Statistical Service (NSS) - in areas such as data linking, disclosure control, longitudinal data analysis, small area estimation, time series analysis, demographic analysis, and econometric modelling - and the support of mission-critical ABS statistical processes.

The research outputs of the Program are released in a series of Research Papers (ABS cat. no. 1351.0), and are routinely published in journal articles and conference papers. Time series products and analyses appear in many ABS publications on a regular basis.

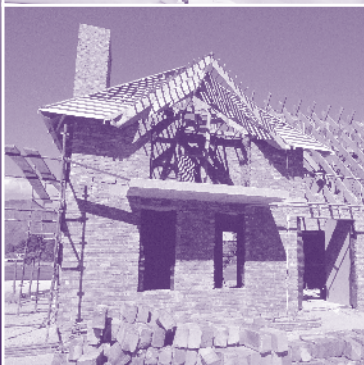
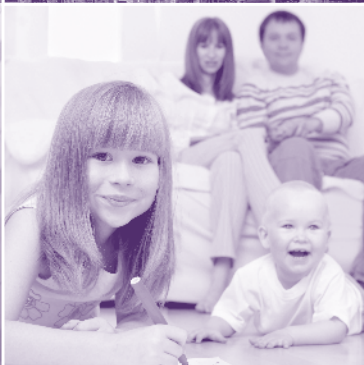
Developments

The main medium-term developments in the program are to:

- ▶ develop methodology for the integration and confidentialisation of multiple data sets - due June 2015
- ▶ develop methodology for the confidentialisation of geospatial data - due June 2015
- ▶ evaluate new approaches for the confidentialisation of business microdata - due June 2015
- ▶ evaluate model-based methods and tools for seasonal adjustment - due June 2015
- ▶ develop a course in analytical methods using ABS data - due June 2015
- ▶ develop methodology for longitudinal analysis and visualisation using the Australian Census *Longitudinal Database* - due June 2015
- ▶ develop visualisation methods and tools for exploratory data analysis - due June 2015
- ▶ develop methodology for the use of satellite and ground sensor data for agricultural statistics - due June 2016
- ▶ develop methodology for dynamic and longitudinal microsimulation in economic, demographic and social analysis - due June 2016
- ▶ develop methodology for firm-level productivity analysis using linked employer-employee data - due June 2016
- ▶ deploy next generation automated coding into production use - due June 2016
- ▶ develop methods and tools for representing, extracting and linkage different entities in heterogeneous data sets - due June 2016
- ▶ develop methodology for modelling time series - due June 2017
- ▶ develop methodology for the use of mobile device location data for population mobility - due June 2017.



Statistical Infrastructure and Corporate Support Programs



Business Register Unit

Program Manager

Christine Williams
Assistant Statistician
Environment Statistics &
Integration Branch

Resources

Program Costs	\$m
2014-2015	6.1
2015-2016	5.8
2016-2017	5.8

Objectives

The Business Register Program maintains the ABS Business Register which is a list of organisations that participate in Australia's formal economy, with structural and classification information about each organisation. The data on the ABS Business Register are used to: provide frames for ABS economic collections; provide information to support ABS economic survey processes; support the ABS Business Demography program; and facilitate the integration of direct collect and administrative economic data within the ABS.

The data on the ABS Business Register are primarily sourced from the Australian Business Register (ABR), the Australian Tax Office (ATO) and via ABS profiling of large, complex businesses. The unit record information on the ABS Business Register is not available for release outside of ABS.

Outputs

The main outputs derived from the ABS Business Register are:

- ▶ survey frames for use in ABS economic data collection
- ▶ information to support ABS economic survey processes including data editing
- ▶ a dataset that is the main input to the annual publication *Counts of Australian Businesses, including Entries and Exits* (cat. no. 8165.0). This publication provides data relevant to users interested in understanding businesses that actively trade in goods or services
- ▶ aggregate business structure reports for internal analysis and research and to meet client requests by Australian and state government agencies and industry associations at the aggregate level
- ▶ infrastructure to support the use of administrative economic data.

Developments

The main medium term developments in the program are to:

- ▶ adopt electronic reporting for administrative data - due December 2014
- ▶ provide technical assistance on Business Registers to countries in Asia and the Pacific Region - due December 2015
- ▶ work with the ABR and ATO to promote quality in ABR and ATO indicator series - ongoing
- ▶ make improvements to ABS Business Register systems to enhance the quality of business structure data and enable integration of datasets in line with corporate developments - ongoing
- ▶ adopt electronic reporting for direct collect data - as resources permit
- ▶ geo-spatially enable the ABS Business Register - as resources permit.

Geography

Program Manager

Graeme Brown
Assistant Statistician
Demography, Regional &
Social Analysis Branch

Resources

Program Costs	\$m
2014-2015	2.8
2015-2016	0.9
2016-2017	0.9

Objectives

The key objective of the Geography Program is to provide geospatial leadership in the statistical production process.

The specific objectives for the program are to:

- ▶ improve the integration of statistical and spatial information through the development and implementation of a Statistical Spatial Framework (SSF) within ABS, the National Statistical System, and internationally
- ▶ develop and apply geospatial capability, standards and processes to improve the collection, production, dissemination and integration of spatial statistics
- ▶ provide geospatial data management, infrastructure, geographic analysis, mapping and geospatial services corporately and through specifically funded work such as the Land Account, Carbon Farming Initiative and the Census of Population and Housing.

Outputs

The program's key outputs relate to the core elements of the SSF and the development and application of geospatial capability in the ABS. These include:

- ▶ documentation and supporting material for the SSF, which is published on the National Statistical Service website
- ▶ the publication of a statistical geography standard, known as the Australian Statistical Geography Standard (ASGS), that consists of five volumes and supporting material, including the geographic boundaries
- ▶ a statistical geography web portal <http://www.abs.gov.au/geography> that provides information on geographic classifications and supporting information
- ▶ maintenance of the ABS Master Spatial Database, including incorporation of Public Sector Mapping Agencies (PSMA) data, including Geocoded National Address File, and additional new sources of data
- ▶ implementation of enterprise geospatial capability, including network analysis, geospatial visualisation and corporate solutions for address coding and validation
- ▶ geospatial capability and support services for the execution of statistical programs including the Census of Population and Housing, Carbon Farming Initiative support, the production of environmental accounts and data acquisition and collection.

Developments

The main medium-term developments in the program are to:

- ▶ implement a new ABS geospatial policy and further develop supporting material to guide both the implementation of the SSF within ABS statistical operations and the development of ABS enterprise architecture - throughout 2014-15
- ▶ improve the corporate geocoding infrastructure, including a new interactive spatial coder - during 2014-15
- ▶ further develop and promote the SSF within Australian governments, nationally and internationally - ongoing
- ▶ continue to develop new geospatial techniques and data sources to support the ABS involvement in the Carbon Farming Initiative, including development of an Agriculture land parcel frame - ongoing
- ▶ continue to develop new geospatial techniques and data sources to produce environmental accounts - ongoing
- ▶ reviewing the scope and effectiveness of the 2011 ASGS and revising it for 2016 - ongoing.

Data Standards and Methods

Program Manager

Graeme Thompson
Assistant Statistician (A/g)
Data Standards & Methods
Branch

Resources

Program Costs	\$m
2014-2015	3.6
2015-2016	3.1
2016-2017	3.1

Objectives

The Data Standards and Methods Program provides conceptual and infrastructure support that underpins the ABS mission. The program is responsible for facilitating the comparability, integration, coherence and quality of ABS statistics, through the use of standard concepts, definitions, classifications, and procedures. The program aims to support the statistical collection process, mitigate statistical risk, enhance capability, and provide statistical information management leadership to the statistical community.

The program seeks to achieve this by:

- ▶ setting and reviewing ABS policies and principles for key statistical collection methods, standards and classifications
- ▶ providing leadership and expertise in the development of statistical and data management standards, practices and procedures within the ABS and National Statistical Service (NSS)
- ▶ building capability in standards, data management, concepts and classifications within the ABS and NSS
- ▶ leading the organisation in the preparation of statistical metadata in readiness for the new statistical infrastructure that aims to improve statistical outcomes.

Outputs

Key outputs from the program cover the following areas:

- ▶ development and maintenance of key national standards on statistical units, concepts, definitions, questions and classifications that underpin population, social, economic and environmental statistics
- ▶ implementation of the Statistical Information Transformation Program to improve statistical outcomes and prepare statistical areas for new ABS 2017 infrastructure
- ▶ building capability in subject matter areas in the use and/or development of statistical collection methods, standards and associated tools for their implementation
- ▶ providing support for the ABS Information Warehouse.

Developments

The main medium developments in the program are to:

- ▶ develop and implement improvements in the management and governance of statistical metadata content leading to improved statistical outcomes - due January 2015
- ▶ develop, in partnership with methodology and statistical areas, the ABS's future coding strategy - due January 2015
- ▶ prepare priority statistical metadata content for use by ABS2017 infrastructure - due June 2015
- ▶ review the conceptual model for Australia's population and social statistics: Measuring Wellbeing - due June 2015
- ▶ review the demographic, occupation, qualification and industry coding indexes in the lead up to the 2016 Census - due June 2016
- ▶ lead the transformation of statistical metadata content with statistical areas progressively - due December 2016
- ▶ influence international developments regarding the interoperability of geospatial and statistical metadata standards and their use in international statistical infrastructure and process standards - due December 2016
- ▶ review labour force standards - due June 2017
- ▶ contribute to the international review of the standard industry classification - due December 2017
- ▶ review family related standards, household income and housing standards, ancestry and citizenship standards - due June 2018
- ▶ promulgate and increase awareness for relevant standards for population, social, economic and environmental statistics on the ABS intranet and the ABS website - ongoing.

ABS 2017 Program Management Office

Program Manager

Greg Amie-Fong
Assistant Statistician
Program Management
Office

Objectives

The Program Management Office (PMO) is responsible for providing centralised and coordinated support to the ABS 2017 Group to support the successful delivery of business process and information management transformation projects. It also has responsibility for the development of the business case for the ABS business transformation program.

The PMO promotes and facilitates excellence in the areas of project management; business process analysis; re-engineering and by providing program support in resource management; and change management. These four functions service the various ABS divisions and specifically the ABS 2017 change program. The PMO provides the critical skills and support required to achieve their outcomes by ensuring:

- ▶ alignment between strategies, programs and projects
- ▶ future designs for business, information management, technology and applications are aligned to ABS Enterprise Architecture
- ▶ good change management through governance
- ▶ visibility of program management information, including tracking and realisation of the business benefits
- ▶ development of methodologies, standards, frameworks, processes and tools
- ▶ robust business analysis and process re-design
- ▶ efficient use of allocated resources.

Outputs

The main outputs will be:

- ▶ refinement of the business case and supporting documentation in support of the ABS business transformation program
- ▶ delivery of an integrated program schedule for the business transformation (e.g. outputs, deliverables, and timeframes) and visual roadmap
- ▶ management of high level external stakeholders who have input to, and affect the outcome of, the final design of the ABS business transformation program
- ▶ development of plans, in consultation with ABS business areas, for the implementation of the business transformation program
- ▶ building and maintaining project management capability, compliant with the Portfolio, Programme, Project Management Maturity Model (P3M3) standard
- ▶ business analysis and process re-engineering services, delivering optimised business processes to the ABS
- ▶ an ABS 2017 Program Plan, including agreed governance model, objectives, outcomes and outputs
- ▶ a high level change management plan including communication and stakeholder engagement components that will be delivered in phases over the duration of the ABS 2017 program.

Developments

The main medium-term developments are to:

- ▶ consult with Government on an appropriately modularised business transformation program that reduces financial risk to Government and delivers tangible, agreed outputs at the end of each module of work - due December 2014
- ▶ develop, in consultation with ABS business areas, an achievable business transformation delivery schedule that meets the needs of the business while delivering agreed outputs to Government - due December 2014
- ▶ improve rigour, processes and tools, compliance to standards and embed 'best practice' particularly in relation to business process analysis and re-engineering and project management - ongoing.

ABS 2017 Information Infrastructure

Program Manager

Gillian Nicoll
Assistant Statistician
Information Infrastructure
Office

Objectives

The ABS 2017 Information Infrastructure Program is responsible for designing and developing the next generation of statistical information infrastructure which, once implemented across ABS collections, will allow the ABS to transform the way its business is undertaken. This program will provide a platform for ABS to reduce costs and burden on providers, bring together various datasets to develop new statistical products more rapidly and make data available in a form which can be easily used.

The objective of the program is to lead the design, development and implementation of:

- ▶ information management governance, infrastructure and standards
- ▶ metadata driven processes that encompass the life cycle management of data and metadata assets.

This infrastructure will lay the platform for ABS business processes to be metadata driven from end-to-end, within a common data management framework. The application of standards based statistical information, in conjunction with the re-engineering of business processes, will greatly increase re-use and automation of end-to-end statistical processes. This will reduce the number of labour intensive manual tasks, which have resulted from incompatibilities between systems and processes.

Outputs

The program has the following main outputs:

- ▶ core infrastructure for the management of data and metadata
- ▶ the statistical workflow management system
- ▶ information management frameworks, standards and governance.

Developments

The main medium-term developments are to:

- ▶ develop and implement a Metadata Registry and Repository to provide end-to-end management, registration, storage and re-use of ABS metadata - due June 2018
- ▶ develop and implement an Enterprise Data Management Environment to provide life cycle management of statistical data - due June 2018
- ▶ develop and implement a statistical workflow management system to facilitate the design, creation and orchestration of statistical processes - due June 2018
- ▶ develop and implement a Statistician's Workbench, which will allow staff to access the core infrastructure for the management of data and metadata - due June 2018
- ▶ collaborate with international organisations on the development and refinement of international metadata models and frameworks, and co-develop joint statistical infrastructure - due progressively through to June 2018.

Data Acquisition and Collection

Program Manager

Adrian Bugg
Assistant Statistician
Data Acquisition &
Collection Branch

Resources

Program Costs	\$m
2014-2015	46.8
2015-2016	47.5
2016-2017	39.7

Objectives

The Data Acquisition and Collection Program provides a comprehensive statistical data collection and dissemination service for the ABS that also encompasses administrative data acquisition. The Data Acquisition and Collection Program is leading the Acquire@ABS program to transform collection operations through introduction of an online reporting capability that will include the next digital Census of Population and Housing in 2016. In doing so, it supports the ABS corporate mission and objectives by providing a high quality, timely and cost effective service while maintaining the trust and cooperation of providers through a range of measures, including:

- ▶ efficient and effective data collection operations
- ▶ developing and maintaining a skilled and committed home and office-based interviewer workforce
- ▶ upholding the confidentiality of information provided to the ABS
- ▶ continually improving the processes and instruments to improve ABS interaction with providers.

Outputs

The main outputs of the Data Acquisition and Collection Program are:

- ▶ data collection and capture including the capabilities, systems, procedures and instruments for all ABS collections
- ▶ provision of the central administrative data acquisition service for the ABS
- ▶ advice to subject matter areas on data acquisition strategies encompassing online forms and other modes
- ▶ sample management for ABS household surveys
- ▶ an active provider engagement strategy to ensure a continued high level of public trust and provider cooperation.

Developments

The main medium-term developments in the program are focused around the ongoing transformation of collection processes and facilities. Key aspects of this modernisation include:

- ▶ establishing the case for further investment in transformation of data acquisition systems and processes - due June 2015
- ▶ achieving benefits from transformation of household and business collection through improvements to the usability, functionality and editing capabilities of online forms - due June 2015
- ▶ implementation of new external identity and access management capability for online forms that is aligned with whole-of-government services - due June 2016
- ▶ further expansion of online reporting capability for business collections - ongoing
- ▶ optimisation of the Monthly Population Survey online form and implementing online reporting capability for other household surveys - ongoing
- ▶ implementing a new ABS data acquisition business model to harmonise business and household data collection and respondent interactions - ongoing
- ▶ establishing requirements for enterprise capabilities to meet data acquisition functions - ongoing
- ▶ preparing for the next digital Census in 2016 and providing enhanced online reporting capabilities that support a wide range of end-user devices - ongoing
- ▶ commencing integration of online reporting capabilities with foundation infrastructure - ongoing.

ABS Centre for Data Integration

Program Manager

Bindi Kindermann
Assistant Statistician (A/g)
Education and Data
Integration Branch

Resources

Program Costs	\$m
2014-2015	1.2
2015-2016	1.9
2016-2017	0.7

Objectives

Statistical data integration involves combining information from different administrative and/or survey sources to provide new datasets to be used for statistical and research purposes. Combining high value data sources, previously used in isolation, to generate an expanded range of statistics provides the opportunity to support policy development, research and discussion more effectively in areas such as societal wellbeing, economic resources, education and health. For this reason, statistical data integration is an area of significant growth across the ABS.

The ABS Centre for Data Integration develops and undertakes data integration projects in consultation with data custodians and users. It supports best practice in conducting data integration projects across the ABS through the development of internal infrastructure, resources and tools. The Centre is also responsible for internal policy and governance arrangements to support the safe and effective conduct of ABS statistical data integration activities. This ensures the ABS meets its obligations as an accredited Integrating Authority, and is able to undertake high risk integration projects, including those involving the linkage of sensitive data.

The key objective of the ABS Centre for Data Integration is to advance the quality and range of statistical data integration activities undertaken by the ABS.

Outputs

The Centre has the following outputs:

- ▶ *2006-2011 Microdata: Australian Census Longitudinal Dataset (ACLD)* (ABS cat. no. 2080.0), which brings together data from the 2006 and 2011 Censuses, allowing new insights into the dynamics and transitions that drive social and economic change over time
- ▶ *Microdata: Australian Census and Migrant Integrated Dataset (ACMID)* (ABS cat. no. 3417.0.55.001), which brings together data from the 2011 Census of Population and Housing and the Department of Immigration and Border Protections Settlement Database, enabling the settlement outcomes of recent migrants to be cross classified by their entry conditions, such as visa stream, whether they applied onshore or offshore, and whether they were a main or secondary applicant
- ▶ secretariat services to internal governance structures responsible for approving and monitoring all ABS data integration projects
- ▶ managing and maintaining ABS data integration policy and communications, which include papers, seminars and presentations as well as the provision of support to various communities of practice to ensure compliance with the Commonwealth principles and governance and institutional arrangements, and to advance ABS best practice
- ▶ developing and maintaining tools and infrastructure to support high quality, safe and efficient data integration activities, as well as managing the design and conduct of individual data integration projects and families of projects.

Developments

- ▶ The main medium-term developments are to:
- ▶ progress strategies for the 2016 Census Data Enhancement program, including privacy, stakeholder engagement and community engagement strategies - due 2014
- ▶ develop and promulgate guidance materials and tools for effective and safe data integration activities - due 2014
- ▶ engage with agencies and undertake additional linkage projects under the 2011 Census Data Enhancement program - ongoing
- ▶ leverage access to significant datasets by building relationships with custodians of datasets and, consistent with legislative frameworks, negotiating arrangements to access these datasets for integration and the production of statistics and research - ongoing
- ▶ leverage new methodological and technological developments to enhance ABS data integration arrangements particularly in the areas of confidentialising data, data linkage accuracy and data linkage quality measures - ongoing
- ▶ engage and collaborate with international organisations on data integration methods, tools and other developments - ongoing.

Customer Services

Program Manager

Merry Branson
Assistant Statistician
Customer Services Branch

Resources

Program Costs	\$m
2014-2015	7.4
2015-2016	6.3
2016-2017	6.2

Objectives

The Customer Services Program provides leadership and expertise in dissemination, partnering with subject matter areas to effectively communicate official statistics through a wide range of high quality information products, services and communication channels.

Customer Services is in the business of maximising the informed use of our data by clients. The program aims to optimise the mix of dissemination channels and improve the efficiency and effectiveness of statistical communication. The program seeks to use leading edge communication and dissemination technology which will produce best practice communication of statistics. The program provides a range of information solutions to cater for a wide range of customers and their evolving information requirements including: self-service statistics and other information on the ABS website and social media; the free national information and referral service; user-pays information consultancies; and providing support for the complex needs of researchers through streamlined access to, and use of, microdata.

The program supports the informed use of ABS statistics through the ongoing simplification of licensing. We encourage use of ABS information in other products and services and ask others to attribute ABS material so customers can always find the original source and supporting information.

The program partners with ABS subject matter areas to provide many of the services and processes by which statistical releases are prepared. The program helps them produce web and database content efficiently and effectively and provides the tools, training and processes to help achieve this. In addition, the program ensures that the presentation and usability of ABS products are enhanced by the use of relevant standards developed using objective research of customer behaviour and needs.

Outputs

The main output of the program is the provision of a range of ABS product and service delivery options to customers, which include:

- ▶ online dissemination services including the ABS website, Facebook and Twitter
- ▶ output database products, which provide large volumes of detailed statistical macro and micro data (confidentialised), such as TableBuilder, ABS.Stat and DataAnalyser
- ▶ Application Programming Interfaces (APIs) that allow two software systems to exchange data over the internet
- ▶ cost recovered information consultancies, providing data tailored to customers' needs
- ▶ cost recovered subscription services, providing customised data on a regular basis and microdata access
- ▶ Confidentialised Unit Record Files
- ▶ telephone/e-mail/fax information and referral services
- ▶ access to a defined set of key data through an iPhone Application 'ABS Stats'.

Developments

The main medium-term developments in the program are to:

- ▶ update licensing ABS data from Creative Commons 2.5 to Creative Commons 3.0 - due 2014-15
- ▶ establish User Groups for the ABS website and microdata to ensure customer requirements and feedback are incorporated into developments - due 2014-15
- ▶ develop and implement a new ABS homepage and a new set of enterprise wide content types - due 2014-15
- ▶ improve search and analytics capabilities to support the ABS online presence - due 2014-15
- ▶ enable customer focussed views of ABS information using the new dynamic tools, such as by region (spatial), by theme, view indicators - due 2015-16
- ▶ update dissemination infrastructure and systems to meet the needs of users in a rapidly changing digital environment, including facilitating re-use of ABS data by external clients and third party portals while ensuring visibility of the ABS brand - due 2015-16
- ▶ progressively implement Web Content Accessibility Guidelines 2.0 compliance and engage in APS networks on accessibility - ongoing
- ▶ continue to take a leading role in an international collaborative project to develop and utilise a multi-dimensional publishing facility (.Stat) with the ability to view data as dynamic tables, graphs, maps and the functionality to provide machine-to-machine web services - ongoing
- ▶ expand the range of ABS data available for customers to use through APIs (an open data approach for sharing content and data between communities and applications) - ongoing.

Statistical Services

Program Managers

Paul Schubert
Assistant Statistician
Statistical Services Branch

Resources

Program Costs	\$m
2014-2015	8.6
2015-2016	8.5
2016-2017	8.2

Objectives

The Statistical Services Program provides specialist services to meet new and ongoing demands in statistics. The program has a focus on ensuring the methods underlying ABS outputs are based on sound, defensible statistical principles and are cost effective.

The program has specific responsibilities for supporting the statistical collection and production processes. It provides advice on, and methods for, the most efficient and effective ways of meeting information needs through all the stages of the survey cycle. This includes advice on quality. The program also undertakes research on statistical and operational research methods to improve the efficiency and reliability of ABS work. The program provides leadership in developing the future methodological infrastructure of the ABS.

The program also aims to minimise the load on data providers through efficient sample designs and techniques to control sample overlap between surveys and, in the case of Australian business surveys, through the review and approval process for the Australian Government Statistical Clearing House, which is managed by the program.

Outputs

The program's main internal products include reports and advice on:

- ▶ methods for making use of, and quality assuring, administrative data for statistical purposes
- ▶ sample design, estimation and other survey related methodological issues
- ▶ research into new methods to meet future statistical needs
- ▶ issues affecting the quality of ABS's statistical products.

The program also supports the development and delivery of training on mathematical, statistical and other methodological issues for all ABS staff.

Externally, in conjunction with Analytical Services, the program produces and publishes a series of *Methodology Advisory Committee Papers* (cat. nos. 1352.0.55.001-1352.0.55.120), which present the results of current research or analysis, often of an experimental nature, to facilitate expert discussion and comment. Guidelines on current best practices of statistical methodology are also produced (cat. no. 1500 series).

The Statistical Clearing House produces an annual report of all surveys directed to 50 or more businesses conducted by Commonwealth agencies during each fiscal year. It also promulgates and promotes survey best practices in agencies conducting business surveys.

Developments

The main medium-term developments are to:

- ▶ develop responsive design strategy to further enhance dynamic and adaptive survey operations to improve efficiency - due December 2014
- ▶ develop more efficient sample design and collection operations for identified business and household surveys, including use of available administrative datasets to improve sampling efficiency - due June 2015
- ▶ develop editing methods and assess tools to improve processing efficiency and support increased use of administrative datasets in statistical production - due June 2015
- ▶ develop methods for dealing with missing data for more complex statistical products (derived from linked data, administrative data) - due June 2015
- ▶ implement methodologies for supporting multi-modal data collection for conducting and processing the Census of Population and Housing and household surveys - due June 2015
- ▶ develop and implement best practices and standards for collecting survey data by web-forms and other electronic modes - due June 2015
- ▶ develop the sampling framework and procedures to support future household surveys vehicles - due June 2016
- ▶ assist the implementation of new methods and tools that are part of the methodological architecture to support future ABS statistical collections and products - due June 2017.

Corporate Services

Program Manager

Donna Nicholson
Assistant Statistician (A/g)
Human Resources Branch

Debra Foggin
Assistant Statistician
Financial Management
Branch

Lewis Conn
Assistant Statistician
Office of the Statistician
& External Engagement
Branch

Resources

Program Costs	\$m
2014-2015	101.5
2015-2016	110.0
2016-2017	111.8

Objectives

The Corporate Services Program provides services in the areas of internal finance, human resources and external engagement to help the ABS achieve its strategic directions. The key objectives of the program are:

- ▶ providing timely, relevant, high quality and best practice corporate services with a customer and business focus to meet the changing needs of internal and external clients
- ▶ engaging and influencing stakeholders to ensure the ABS's interests are considered and accommodated, including in whole of government initiatives
- ▶ positioning the ABS to meet its current and future workforce needs
- ▶ providing high quality corporate infrastructure, and timely and comprehensive management information
- ▶ leading the ABS in the areas of culture, legislation, legal compliance, leadership capability development, promoting and protecting the ABS brand and reputation, and financial and people management.

Outputs

The main outputs of the Corporate Services Program are:

- ▶ a full range of integrated and coordinated services to support the human resources life cycle, from recruitment through to retirement
- ▶ leadership, support and guidance (including building capability) to ensure the ABS is maximising individual employees' potential
- ▶ leadership and consultancy on workforce and business planning, budgeting, business continuity, financial reporting, legislation, legal compliance, policies and risk management
- ▶ maintenance and development of corporate support systems and services
- ▶ a high quality communication service for the ABS and the Australian Statistician.

Developments

The main medium-term developments in the program are to:

- ▶ optimise, upgrade and integrate financial systems and associated management information - development and implementation of an ABS Financial Management System will begin in 2014-15
- ▶ implement the new ABS communication strategy to manage and enhance the ABS reputation and brand, improve effectiveness of internal communication, and maintain strong community awareness and support for the next Census of Population and Housing - the next Census will be run in 2016
- ▶ implement changed employment arrangements resulting from the new Enterprise Agreements for ABS employees and negotiate the next Enterprise Agreement within the boundaries of the Australian Government Public Sector Workplace Bargaining Policy - ongoing
- ▶ continue to enhance client service capability and culture via the corporate services delivery model - ongoing
- ▶ implement the key ABS People Plan strategies including those related to workforce planning, people and performance management, learning and development, leadership and general capability enhancement, and cultural renewal - ongoing
- ▶ continued implementation of the ABS People Capability Framework to enhance our people and workforce planning - ongoing
- ▶ provide leadership in identifying innovative ways to deliver more efficient and effective procurement and travel services - ongoing
- ▶ support the business outputs of the ABS by ensuring the ongoing development and maintenance of statistical capability, leadership and business skills in the workforce - ongoing
- ▶ achieving gender balance in leadership within the ABS through implementation of recommendations from the study of Gender Balanced Leadership - ongoing
- ▶ provide leadership in supporting the ABS transformation by updating relevant policies and raise awareness to ensure the ABS's continued compliance with legislation - ongoing.

Technology Services

Program Managers

Patrick Hadley
First Assistant Statistician
Technology Services
Division

Resources

Program Costs	\$m
2014-2015	58.9
2015-2016	40.3
2016-2017	44.2

Objectives

The Technology Services Program provides strong leadership in innovation through new approaches and application of Information and Communication Technology (ICT) to support ABS business.

The key objectives for the Technology Services Program are to:

- ▶ provide effective technology support to statistical programs and the ABS workforce
- ▶ ensure the ABS leverages information technology strategically to support its mission and enable transformation
- ▶ ensure the ABS has effective and compliant security policies, practices and procedures
- ▶ represent the ABS and build strategic relationships in the broader ICT industry, government and international statistical communities in relation to ICT and security matters
- ▶ ensure consistency with, and support to, whole of government technology strategies for e-Government and the digital economy
- ▶ ensure sustainability of ICT investments and services through building and maintaining a highly capable and motivated ICT workforce.

Outputs

The main outputs of the program are:

- ▶ the delivery of enterprise wide technology solutions to support statistical and business processes for the ABS
- ▶ the delivery of consistent and measurable services for business and application analysis, design, programming, acquisition and commissioning services to help improve ABS business processes
- ▶ the provision of reliable, cost effective and secure technology infrastructure, library and knowledge management services

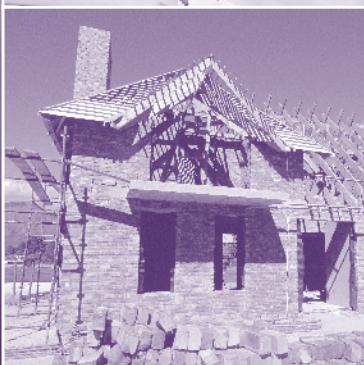
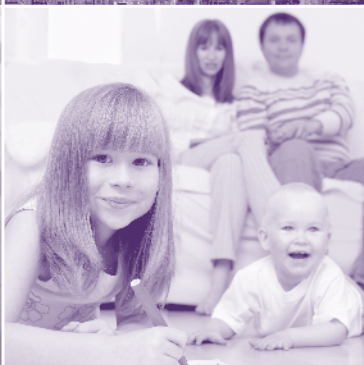
Developments

The main medium-term developments in the program are to:

- ▶ implement and migrate business processes onto the Metadata Registry and Repository and Business Process Management system - due July 2015
- ▶ improve the quality of metadata classification across the ABS via the metadata authoring environment project - due July 2015
- ▶ source or design/build new tools to support a Statistical Enterprise Data Management Environment - due July 2015
- ▶ implement server based computing and mobile technologies to enable flexible office spaces and remote working for the future (End User Computing environment) - due July 2015
- ▶ implement a Learning Management System to manage learning in the ABS environment - due July 2015
- ▶ develop an enterprise solution for External Identity Access Management - due July 2015
- ▶ provide an upgraded Financial Management System - due July 2016
- ▶ provide ICT services and systems for the 2016 Census of Population and Housing and continued development for dissemination products - due July 2017
- ▶ provide technology solutions to support ABS transformation and the ABS 2017 program of work - due July 2017
- ▶ develop enterprise wide approaches to ICT systems and services in the ABS - ongoing
- ▶ undertake security programs improvements to meet new business requirements, ICT services and government compliance - ongoing
- ▶ lead and support ABS innovation initiatives - ongoing
- ▶ strengthen internal processes and approaches through the adoption of industry standards - ongoing.



Appendices



Statistical and topic advisory groups

National groups

Aboriginal and Torres Strait Islander Demographic Statistics Expert Advisory Group
Advisory Group on Aboriginal and Torres Strait Islander Statistics
Australasian Mortality Data Interest Group
Australia and New Zealand Population Workshop
Australian Government Statistical Forum
Australian Health Survey Reference Group and related advisory groups
Australian Statistics Advisory Council
Australian Transport Data Action Network
Census - Indigenous Enumeration Strategy Working Group
Committee of Australian Sport and Recreation Officials Research Group
Culture Statistics Working Group
Data and Performance Measurement Principal Committee
Demography Statistics Advisory Group
Disability Policy and Research Working Group
Early Childhood Data Subgroup
Economic Statistics User Group
Family Statistics Advisory Group
Gender Statistics Advisory Group
General Social Survey Reference Group
Health Statistics Advisory Group
Information and Communication Technology Statistics Reference Group
Innovation (incl. R&D) Statistics Reference Group
Input-Output Statistics User Group
International Trade in Services User Group
Labour Statistics Advisory Group
Longitudinal Studies Advisory Group
Mental Health Information Strategy Standing Committee
Methodology Advisory Committee
Migrant Statistics Management Board
Migrant Statistics Reference Group
Mortality Statistics Advisory Group
National Advisory Group on Aboriginal and Torres Strait Islander Health Information and Data
National Civil Registration and Statistics Advisory Committee
National Civil Registration and Statistics Improvement Committee
National Community Services Information Management Group
National Corrective Services Statistics Advisory Group
National Crime Statistics Advisory Group
National Criminal Courts Statistics Advisory Group
National Health Information and Performance Principal Committee
National Health Information Standards and Statistics Committee
National Housing and Homelessness Information Management Group
Patient Experience Survey Reference Group
Personal Safety Survey Advisory Group
Population Estimates Technical Workshop
Private Hospital Statistics User Group

Productivity Measurement Reference Group
Programme for Assessment of Adult Competencies Reference Group
Round Table on Aboriginal and Torres Strait Islander Statistics
Rural Environment and Agriculture Statistics User Forum
Schools Data Subgroup
Standard Business Reporting Taxonomy Approval Committee
Standing Committee on Performance Reporting
State Accounts User Group
Statistical Clearing House Advisory Forum
Steering Committee for the Review of Government Service Provision
Strategic Cross-sectoral Data Committee for Early Childhood, Education and Training
Structural Issues in the Workforce Sub-Committee, Workforce Profile Working Group (Community and Disability Services Ministers' Advisory Council (CDSMAC) Sub-Committee)
Survey of Disability, Ageing and Carers Reference Group
Tourism Research Advisory Board

Contacts

FOR STATISTICAL INFORMATION

National Information and Referral Service

Telephone: 1300 135 070
Facsimile: 1300 135 211
Email: client.services@abs.gov.au
Mail: Client Services, ABS GPO Box 796,
Sydney NSW 2001

FOR GENERAL INFORMATION

Central Office, Canberra

Telephone: 02 6252 5000
Facsimile: 02 6252 5566
Mail: Locked Bag 10,
Belconnen ACT 2616
Counter: ABS House,
45 Benjamin Way,
Belconnen

New South Wales Office

Mail: GPO Box 796,
Sydney NSW 2001
Counter: Level 10,
44 Market Street, Sydney

Victorian Office

Mail: GPO Box 2796Y
Melbourne Vic. 3001
Counter: South Tower,
485 LaTrobe Street, Melbourne

Queensland Office

Mail: GPO Box 9817
Brisbane Qld 4001
Counter: 639 Wickham Street,
Fortitude Valley, Brisbane

South Australian Office

Mail: GPO Box 2272
Adelaide SA 5001
Counter: 9th Floor, ANZ House
11 Waymouth Street, Adelaide

Western Australian Office

Mail: GPO Box K881
Perth WA 6842
Counter: Level 15,
Exchange Plaza
2 Sherwood Court, Perth

Tasmanian Office

Mail: GPO Box 66
Hobart Tas. 7001
Counter: Ground Floor
200 Collins Street, Hobart

Northern Territory Office

Mail: GPO Box 3796
Darwin NT 0801
Counter: 3rd Floor, Civitas Building,
22 Harry Chan Avenue, Darwin

Australian Capital Territory Office

Mail: Locked Bag 10
Belconnen ACT 2616
Counter: ABS House
45 Benjamin Way, Belconnen

